

District I
PO Box 1980, Hobbs, NM 88241-1980

District II
811 South First, Artesia, NM 88210

District III
1000 Rio Brazos Rd., Aztec, NM 87410

District IV
2040 South Pacheco, Santa Fe, NM 87505

State of New Mexico
Energy, Minerals & Natural Resources Department

OIL CONSERVATION DIVISION
2040 South Pacheco
Santa Fe, NM 87505

Form C-101
Revised October 18, 1994
Instructions on back
Submit to Appropriate District Office
State Lease - 6 Copies
Fee Lease - 5 Copies

☐ AMENDED REPORT

APPLICATION FOR PERMIT TO DRILL, RE-ENTER, DEEPEN, PLUGBACK, OR ADD A ZONE

¹ Operator Name and Address Nearburg Producing Company 3300 North "A" Street Building 2, Suite 120 Midland, TX 79705		² OGRID Number 015742
		³ API Number 30 - 025 35201
⁴ Property Code 26793	⁵ Property Name Outland State Unit	⁶ Well No. 3

⁷Surface Location

UL or lot no.	Section	Township	Range	Lot Idn	Feet from the	North/South line	Feet from the	East/West Line	County
P	11	21S	34E		660	South	990	East	Lea

⁸Proposed Bottom Hole Location If Different From Surface

UL or lot no.	Section	Township	Range	Lot Idn	Feet from the	North/South line	Feet from the	East/West Line	County
⁹ Proposed Pool 1 Wilson Morrow Gas					¹⁰ Proposed Pool 2				

¹¹ Work Type Code N	¹² Well Type Code G	¹³ Cable/Rotary R	¹⁴ Lease Type Code S	¹⁵ Ground Level Elevation 3676
¹⁶ Multiple No	¹⁷ Proposed Depth 13000	¹⁸ Formation Morrow	¹⁹ Contractor Patterson #45	²⁰ Spud Date 11-01-00

²¹Proposed Casing and Cement Program

Hole Size	Casing Size	Casing weight/foot	Setting Depth	Sacks of Cement	Estimated TOC
17-1/2"	13-3/8"	65#	1350'	800 sxs	Surface
12-1/4"	9-5/8"	36# & 40#	5700'	500 sxs	
8-3/4"	5-1/2"	26# & 29#	13,000'	500 sxs	

²²Describe the proposed program. If this application is to DEEPEN or PLUG BACK give the data on the present productive zone and proposed new productive zone. Describe the blowout prevention program, if any. Use additional sheets if necessary.

Propose to drill the well to sufficient depth to evaluate the Morrow formation. After reaching TD, logs will be run and casing set if the evaluation is positive. Perforate, test and stimulate as necessary to establish production.

Acreage dedication is 320 acres; S/2 of Section 11.

Permit Expires 1 Year From Approval
Date Unless Drilling Underway

²³I hereby certify that the information given above is true and complete to the best of my knowledge and belief.

Signature:

Kim Stewart

Printed name: Kim Stewart

Title: Regulatory Analyst

Date: 10-12-00

Phone: 915/686-8235

OIL CONSERVATION DIVISION

Approved By:

Title:

Approval Date:

Expiration Date:

Conditions of Approval:
Attached: ☐

*42
my*

DISTRICT I
P.O. Box 1980, Hobbs, NM 88241-1980

State of New Mexico
Energy, Minerals and Natural Resources Department

Form C-102
Revised February 10, 1994
Submit to Appropriate District Office
State Lease - 4 Copies
Fee Lease - 3 Copies

DISTRICT II
P.O. Drawer DD, Artesia, NM 88211-0719

DISTRICT III
1000 Rio Brazos Rd., Artec, NM 87410

OIL CONSERVATION DIVISION

P.O. Box 2088
Santa Fe, New Mexico 87504-2088

DISTRICT IV
P.O. Box 2088, Santa Fe, NM 87504-2088

☐ AMENDED REPORT

WELL LOCATION AND ACREAGE DEDICATION PLAT

API Number 30-025-35201	Pool Code 87460	Pool Name Wilson Morrow Gas
Property Code 26793	Property Name OUTLAND STATE UNIT	Well Number 3
OGRID No. 15742	Operator Name NEARBURG PRODUCING COMPANY	Elevation 3676

Surface Location

UL or lot No.	Section	Township	Range	Lot Idn	Feet from the	North/South line	Feet from the	East/West line	County
P	11	21 S	34 E		660	SOUTH	990	EAST	LEA

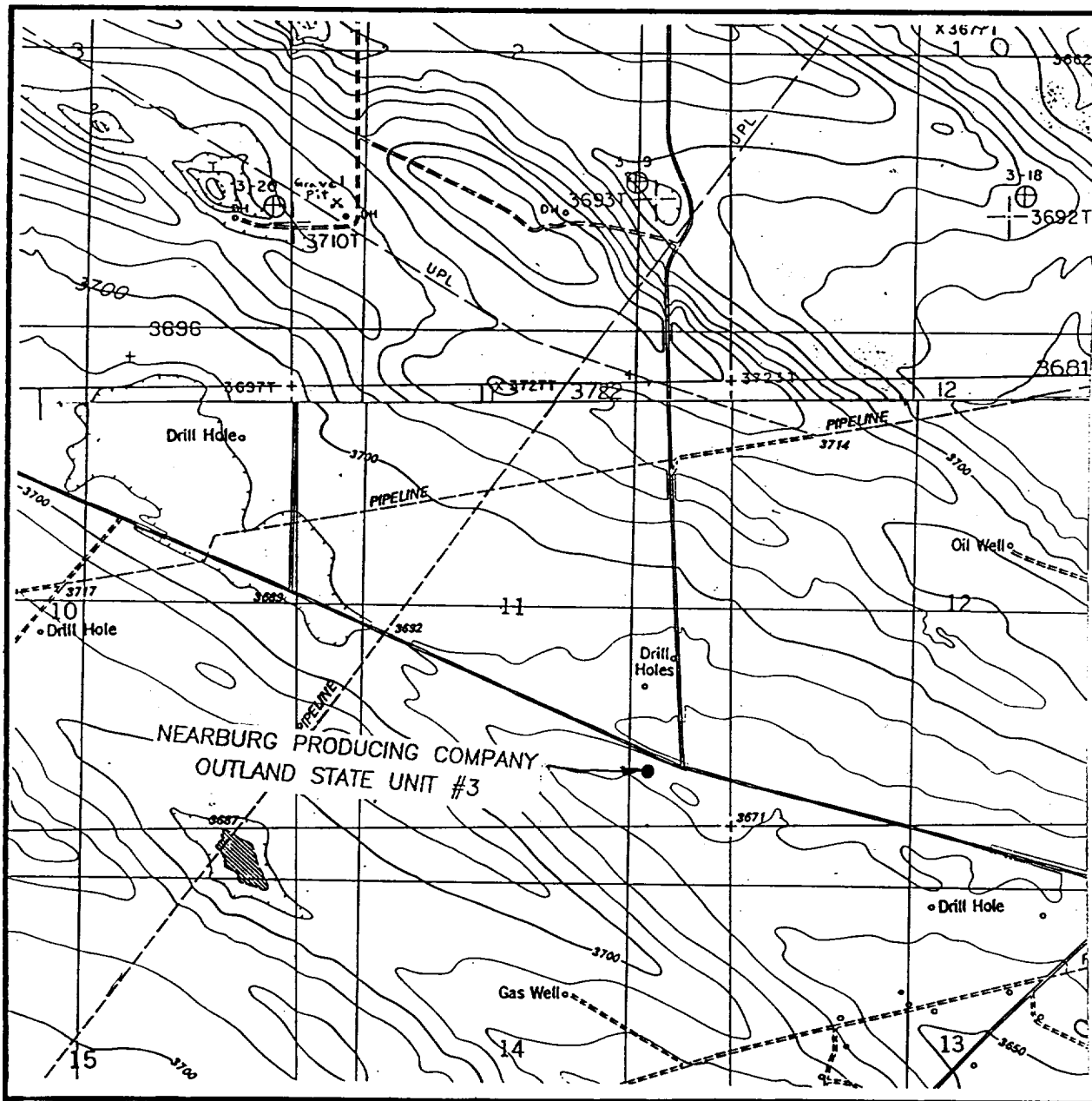
Bottom Hole Location If Different From Surface

UL or lot No.	Section	Township	Range	Lot Idn	Feet from the	North/South line	Feet from the	East/West line	County
Dedicated Acres 320	Joint or Infill N	Consolidation Code	Order No.						

NO ALLOWABLE WILL BE ASSIGNED TO THIS COMPLETION UNTIL ALL INTERESTS HAVE BEEN CONSOLIDATED
OR A NON-STANDARD UNIT HAS BEEN APPROVED BY THE DIVISION

	OPERATOR CERTIFICATION I hereby certify the the information contained herein is true and complete to the best of my knowledge and belief. Signature Kim Stewart Printed Name Regulatory Analyst Title October 12, 2000 Date
	SURVEYOR CERTIFICATION I hereby certify that the well location shown on this plat was plotted from field notes of actual surveys made by me or under my supervision, and that the same is true and correct to the best of my belief. OCTOBER 6, 2000 Date Surveyed Signature & Seal of Professional Surveyor W.O. Num. 00-1249 Certificate No. RONALD S. EIDSON, 3239 PROFESSIONAL SURVEYOR, 12641

LOCATION VERIFICATION MAP



SCALE: 1" = 2000'

CONTOUR INTERVAL - 10'

SEC. 11 TWP. 21-S RGE. 34-E

SURVEY N.M.P.M.

COUNTY LEA

DESCRIPTION 660' FSL & 990' FEL

ELEVATION 3676

OPERATOR NEARBURG PRODUCING COMPANY

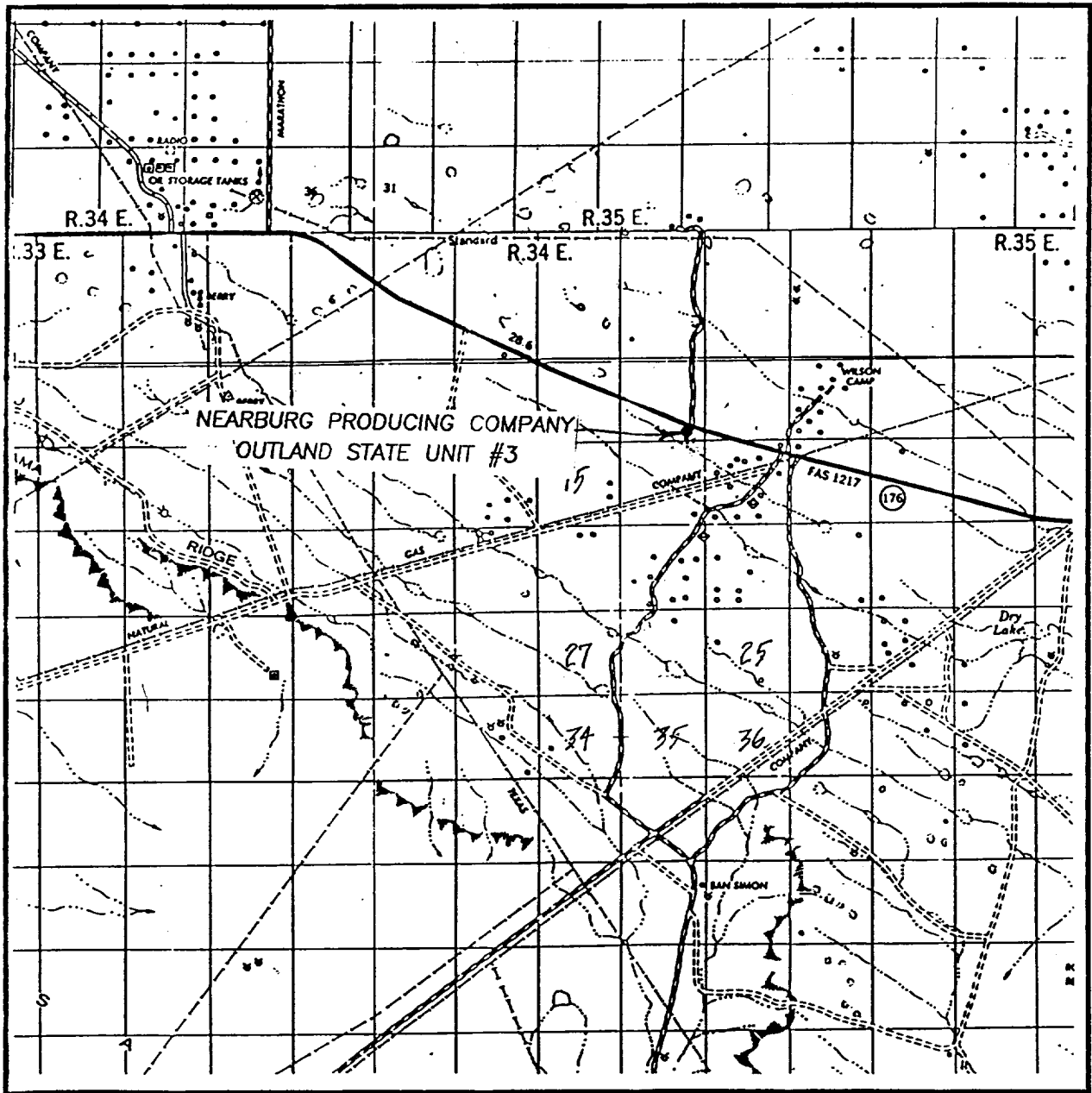
LEASE OUTLAND STATE UNIT

U.S.G.S. TOPOGRAPHIC MAP

MONUMENT SW, SAN SIMON RANCH, N.M.

JOHN WEST SURVEYING
HOBBS, NEW MEXICO
(505) 393-3117

VICINITY MAP



SCALE: 1" = 2 MILES

SEC. 11 TWP. 21-S RGE. 34-E

SURVEY N.M.P.M.

COUNTY LEA

DESCRIPTION 660' FSL & 990' FEL

ELEVATION 3676

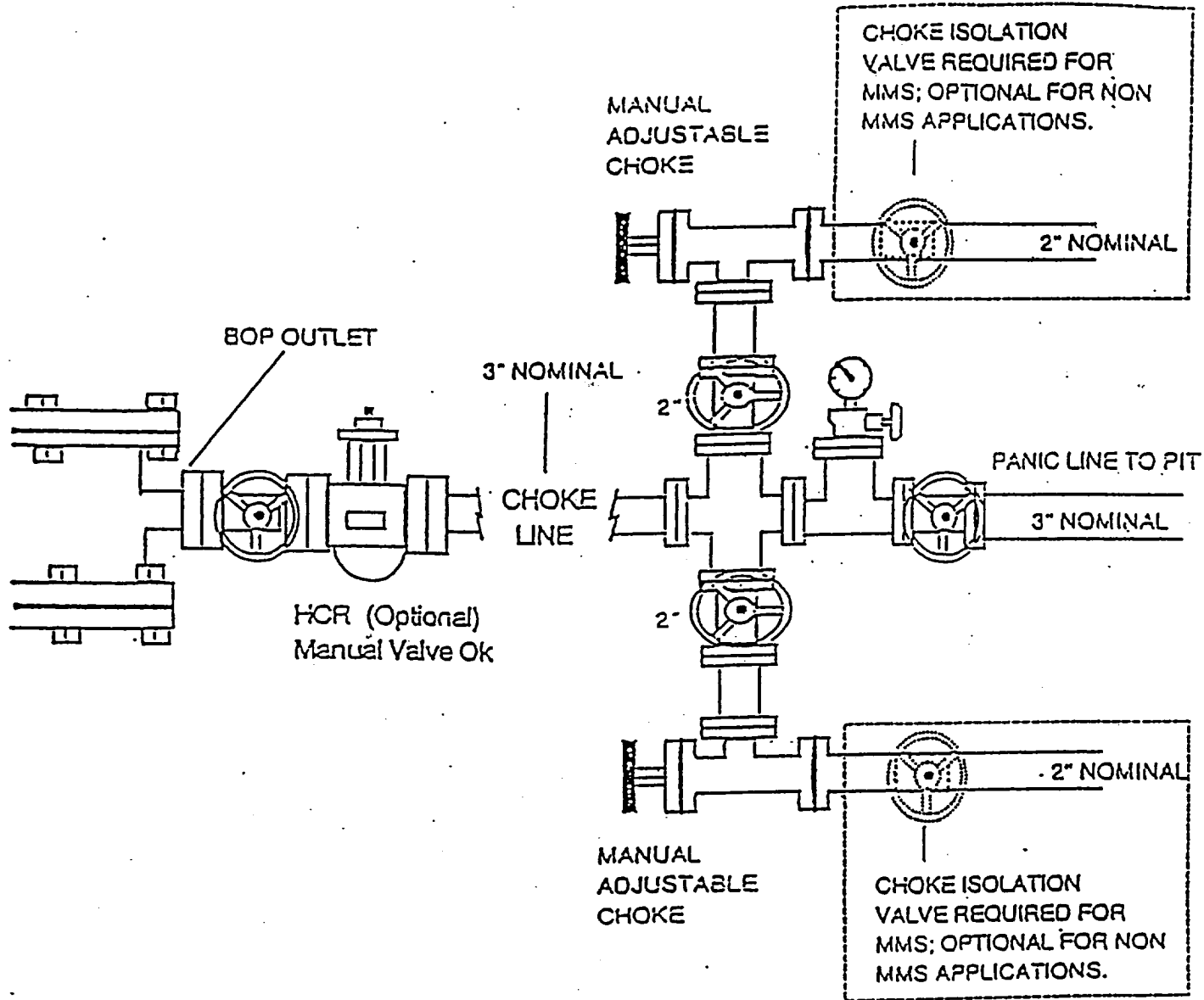
OPERATOR NEARBURG PRODUCING COMPANY

LEASE OUTLAND STATE UNIT

**JOHN WEST SURVEYING
HOBBS, NEW MEXICO**

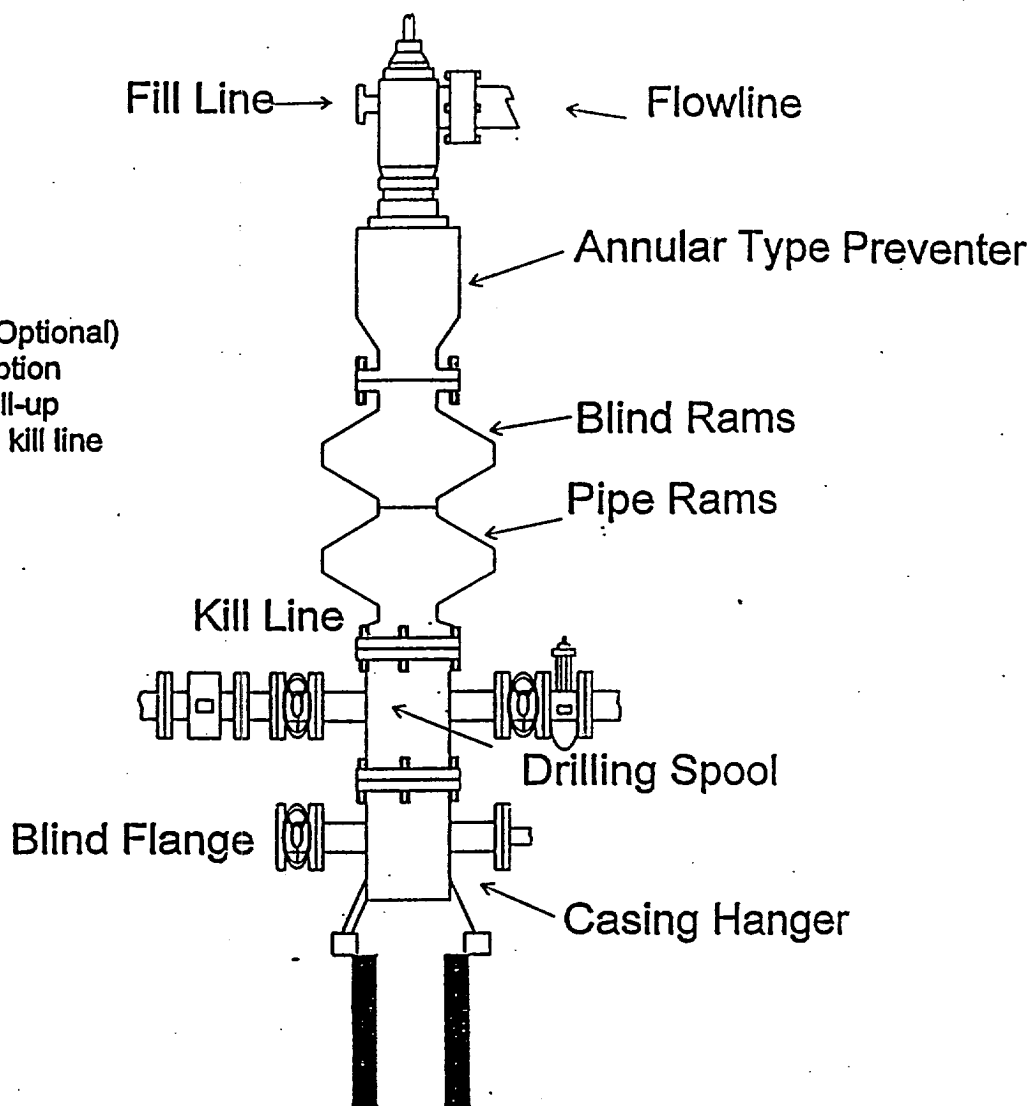
(505) 393-3117

ARBURG PRODUCING COMPA
CHOKE MANIFOLD
5M SERVICE



NEARBURG PRODUCING COMPANY
BOPE SCHEMATIC

Rotating Head (Optional)
Drilling Nipple option
must include a fill-up
line. Do not use kill line
for fill up.



1500 Series