

NEW MEXICO OIL CONSERVATION COMMISSION
WELL LOCATION AND ACREAGE DEDICATION PLAT
HOBBS OFFICE O. C. C.

Form C-102
Supersedes C-128
Effective 1-1-65

All distances must be from the outer boundaries of the Section.

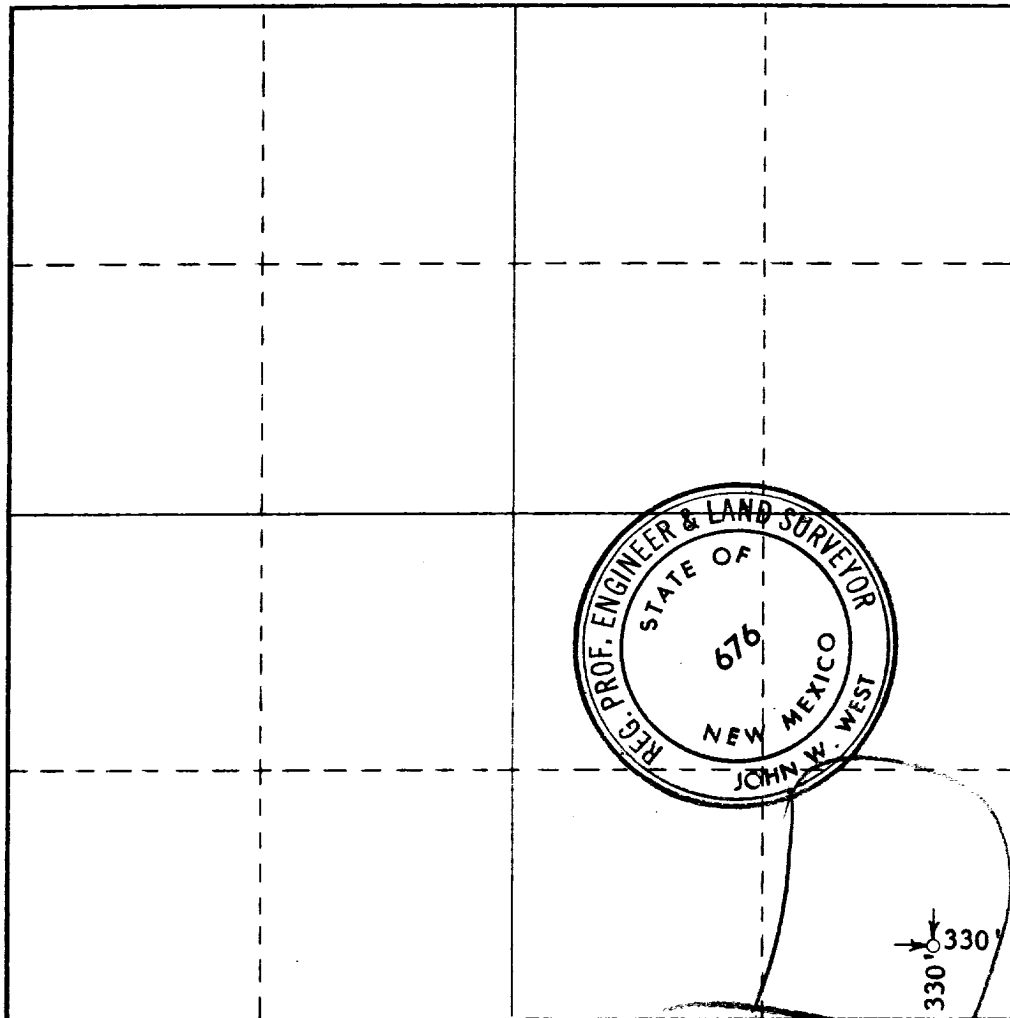
Operator MAX M. WILSON			Lease MINNIE STROUD			Well No. 1		
Unit Letter P	Section 17	Township 6 SOUTH	Range 36 EAST	County ROOSEVELT				
Actual Footage Location of Well:								
330 feet from the SOUTH line and			330 feet from the EAST line					
Ground Level Elev. 4134.0	Producing Formation G14		Pool Wildcat			Dedicated Acreage: 40 Acres		

1. Outline the acreage dedicated to the subject well by colored pencil or hatchure marks on the plat below.
2. If more than one lease is dedicated to the well, outline each and identify the ownership thereof (both as to working interest and royalty).
3. If more than one lease of different ownership is dedicated to the well, have the interests of all owners been consolidated by communitization, unitization, force-pooling, etc?

☐ Yes ☐ No If answer is "yes;" type of consolidation _____

If answer is "no," list the owners and tract descriptions which have actually been consolidated. (Use reverse side of this form if necessary.) _____

No allowable will be assigned to the well until all interests have been consolidated (by communitization, unitization, forced-pooling, or otherwise) or until a non-standard unit, eliminating such interests, has been approved by the Commission.



CERTIFICATION

I hereby certify that the information contained herein is true and complete to the best of my knowledge and belief.

Name **Max M. Wilson**

Position **Owner**

Company **Max M. Wilson**

Date **July 19, 1967**

I hereby certify that the well location shown on this plat was plotted from field notes of actual surveys made by me or under my supervision, and that the same is true and correct to the best of my knowledge and belief.

Date Surveyed
JUNE 14, 1967

Registered Professional Engineer and/or Land Surveyor

John W. West

Certificate No. **676**

0 330 660 '90 1320 1650 1980 2310 2640 2000 1500 1000 500 0