

UNITED STATES
DEPARTMENT OF THE INTERIOR
GEOLOGICAL SURVEY

APPLICATION FOR PERMIT TO DRILL, DEEPEN, OR PLUG BACK

1a. TYPE OF WORK

DRILL ☒

DEEPEN ☐

PLUG BACK ☐

b. TYPE OF WELL

OIL
WELL ☒

GAS
WELL ☐

OTHER

SINGLE
ZONE ☐

MULTIPLE
ZONE ☐

2. NAME OF OPERATOR

Eugene E. Nearburg

3. ADDRESS OF OPERATOR

3303 Lee Parkway, Dallas, Texas 75219

4. LOCATION OF WELL (Report location clearly and in accordance with any State requirements.)*
At surface

660' FSL & 1980' FEL
At proposed prod. zone

14. DISTANCE IN MILES AND DIRECTION FROM NEAREST TOWN OR POST OFFICE*

5 miles east of Bluitt, New Mexico

15. DISTANCE FROM PROPOSED*

LOCATION TO NEAREST
PROPERTY OR LEASE LINE, FT.
(Also to nearest drlg. unit line, if any)

660'

18. DISTANCE FROM PROPOSED LOCATION*

TO NEAREST WELL, DRILLING, COMPLETED,
OR APPLIED FOR, ON THIS LEASE, FT.

1320'

16. NO. OF ACRES IN LEASE

1920

19. PROPOSED DEPTH

4800'

17. NO. OF ACRES ASSIGNED
TO THIS WELL

80

20. ROTARY OR CABLE TOOLS

Rotary

21. ELEVATIONS (Show whether DF, RT, GR, etc.)

4011.5 GR

22. APPROX. DATE WORK WILL START*

2-1-70

23.

PROPOSED CASING AND CEMENTING PROGRAM

SIZE OF HOLE	SIZE OF CASING	WEIGHT PER FOOT	SETTING DEPTH	QUANTITY OF CEMENT
12 1/4"	8 5/8"	28	290	150sx
7 7/8"	4 1/2"	9.5	4800	200sx

We plan to drill a 12 1/4" hole below the surface water estimated to be approximately 275' and set 8 5/8" casing with cement circulated to the surface.

A 7 7/8" hole will be drilled on to total depth and after running electric logs, if production is indicated, a 4 1/2" casing string will be set for completion.

IN ABOVE SPACE DESCRIBE PROPOSED PROGRAM: If proposal is to deepen or plug back, give data on present productive zone and proposed new productive zone. If proposal is to drill or deepen directionally, give pertinent data on subsurface locations and measured and true vertical depths. Give blowout preventer program, if any.

24.

SIGNED

James C. Blalock

TITLE Petroleum Engineer

DATE 1-5-70

(This space for Federal or State office use)

PERMIT NO.

APPROVED BY

CONDITIONS OF APPROVAL, IF ANY:

TITLE

APPROVAL DATE

APPROVED

JAN 13 1970
ARTHUR R. BROWN
DISTRICT ENGINEER

*See Instructions On Reverse Side

5. LEASE DESIGNATION AND SERIAL NO.

NM-041698-A

6. IF INDIAN, ALLOTTEE OR TRIBE NAME

7. UNIT AGREEMENT NAME

8. FARM OR LEASE NAME

Kirkpatrick Federal

9. WELL NO.

6

10. FIELD AND POOL, OR WILDCAT

E. Bluitt San Andres Assoc

11. SEC., T., R., M., OR BLK.
AND SURVEY OR AREA

Sec12, T8S, R37E

12. COUNTY OR PARISH

Roosevelt

13. STATE

N. M.

**NEW MEXICO OIL CONSERVATION COMMISSION
WELL LOCATION AND ACREAGE DEDICATION PLAT**

Form C-102
Supersedes C-128
Effective 1-1-65

All distances must be from the outer boundaries of the Section.

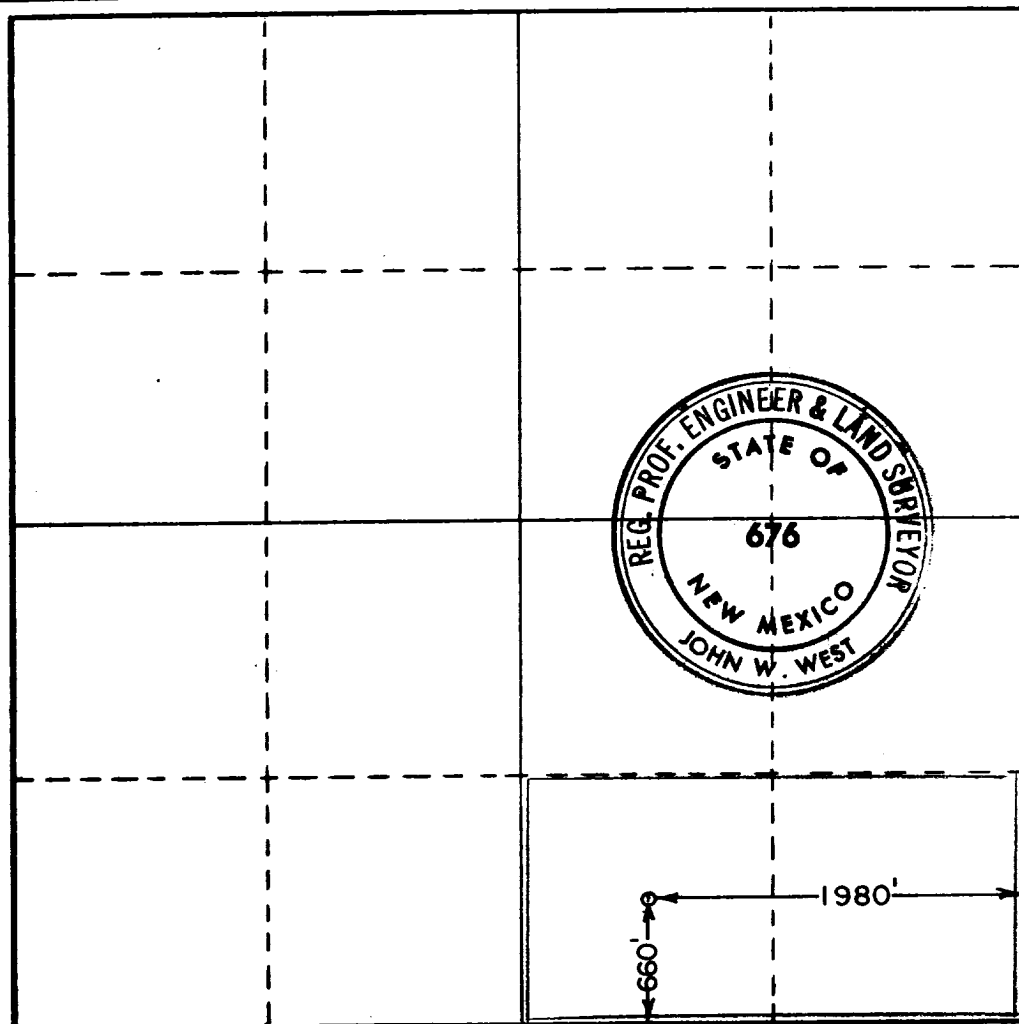
Operator EUGENE E. NEARBURG			Lease KIRKPATRICK		Well No. 6
Unit Letter 0	Section 12	Township 8 SOUTH	Range 37 EAST	County ROOSEVELT	
Actual Footage Location of Well: 660 feet from the SOUTH line and 1980 feet from the EAST line					
Ground Level Elev. 4011.5	Producing Formation San Andres (P2)		Pool E. Bluit San Andres Assoc.	Dedicated Acreage: 80 Acres	

1. Outline the acreage dedicated to the subject well by colored pencil or hachure marks on the plat below.
2. If more than one lease is dedicated to the well, outline each and identify the ownership thereof (both as to working interest and royalty).
3. If more than one lease of different ownership is dedicated to the well, have the interests of all owners been consolidated by communitization, unitization, force-pooling, etc?

☐ Yes ☐ No If answer is "yes," type of consolidation _____

If answer is "no," list the owners and tract descriptions which have actually been consolidated. (Use reverse side of this form if necessary.) _____

No allowable will be assigned to the well until all interests have been consolidated (by communitization, unitization, forced-pooling, or otherwise) or until a non-standard unit, eliminating such interests, has been approved by the Commission.



CERTIFICATION

I hereby certify that the information contained herein is true and complete to the best of my knowledge and belief.

James C. Blackmon
James C. Blackmon

Name
Petroleum Engineer

Position
Eugene E. Nearburg

Company
January 5, 1970

Date

I hereby certify that the well location shown on this plat was plotted from field notes of actual surveys made by me or under my supervision, and that the same is true and correct to the best of my knowledge and belief.

Date Surveyed
December 31, 1969

Registered Professional Engineer and/or Land Surveyor

John W. West
Certificate No. **676**

