

UNITED STATES
DEPARTMENT OF THE INTERIOR
GEOLOGICAL SURVEY

APPLICATION FOR PERMIT TO DRILL, DEEPEN, OR PLUG BACK

1a. TYPE OF WORK

DRILL ☒DEEPEN ☐PLUG BACK ☐

b. TYPE OF WELL

OIL
WELL ☒GAS
WELL ☐OTHER ☐SINGLE
ZONE ☐MULTIPLE
ZONE ☐

2. NAME OF OPERATOR

Wainoco, Inc.

3. ADDRESS OF OPERATOR

1306 Gihls Tower West, Midland, Texas 79701

4. LOCATION OF WELL (Report location clearly and in accordance with any State requirements.)*

At surface

Unit "A" 660' FNL & 660' FEL, Section 33, T-8-S, R-37-E

At proposed prod. zone

Unit "A" 660' FNL & 660' FEL, Section 33, T-8-S, R-37-E

14. DISTANCE IN MILES AND DIRECTION FROM NEAREST TOWN OR POST OFFICE*

13 miles SE of Milensand, New Mexico

15. DISTANCE FROM PROPOSED*

LOCATION TO NEAREST
PROPERTY OR LEASE LINE, FT.
(Also to nearest drlg. unit line, if any)

660'

16. NO. OF ACRES IN LEASE

160 1040

18. DISTANCE FROM PROPOSED LOCATION*

TO NEAREST WELL, DRILLING, COMPLETED,
OR APPLIED FOR, ON THIS LEASE, FT.

1320'

19. PROPOSED DEPTH

5050'

17. NO. OF ACRES ASSIGNED
TO THIS WELL

80 40

20. ROTARY OR CABLE TOOLS

Rotary

21. ELEVATIONS (Show whether DF, RT, GR, etc.)

4007' GL

22. APPROX. DATE WORK WILL START*

1-15-77

23.

PROPOSED CASING AND CEMENTING PROGRAM

SIZE OF HOLE	SIZE OF CASING	WEIGHT PER FOOT	SETTING DEPTH	QUANTITY OF CEMENT
11"	8 5/8"	28#	375'	500 sx.
7 7/8"	4 1/2"	10.5#	5050'	300 sx.

Propose to drill a San Andres well using rotary tools to approximately 5050'. Cement will be circulated on the 8 5/8" casing string. Plan to test significant shows and evaluate with adequate logging program. Completion or abandonment will be performed in accordance with prudent practices and regulatory body requirements. A double ram series 900 BOP and choke manifold will be used from 8 5/8" casing to total depth.

SEE ATTACHED BOP SKETCH.

Unless drilling operations have
commenced, this permit approval
Expires 5-3-77

SEE ATTACHED FOR
CONDITIONS OF APPROVAL

IN ABOVE SPACE DESCRIBE PROPOSED PROGRAM: If proposal is to deepen or plug back, give data on present productive zone and proposed new productive zone. If proposal is to drill or deepen directionally, give pertinent data on subsurface locations and measured and true vertical depths. Give blowout preventer program, if any.

24.

SIGNED

J. W. Smalley

TITLE

Agent

DATE

12-29-76

(This space for Federal or State office use)

PERMIT NO.

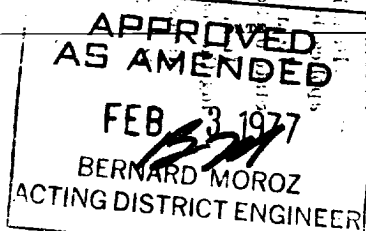
APPROVAL DATE

APPROVED BY

TITLE

CONDITIONS OF APPROVAL, IF ANY:

*See Instructions On Reverse Side



RECEIVED

FEB. 1977

OIL CONSERVATION COMM.
POBES, N. M.

NEW MEXICO OIL CONSERVATION COMMISSION
WELL LOCATION AND ACREAGE DEDICATION

Form O-102
Supersedes O-128
Effective 1-1-65

All distances must be from the outer boundaries of the Section

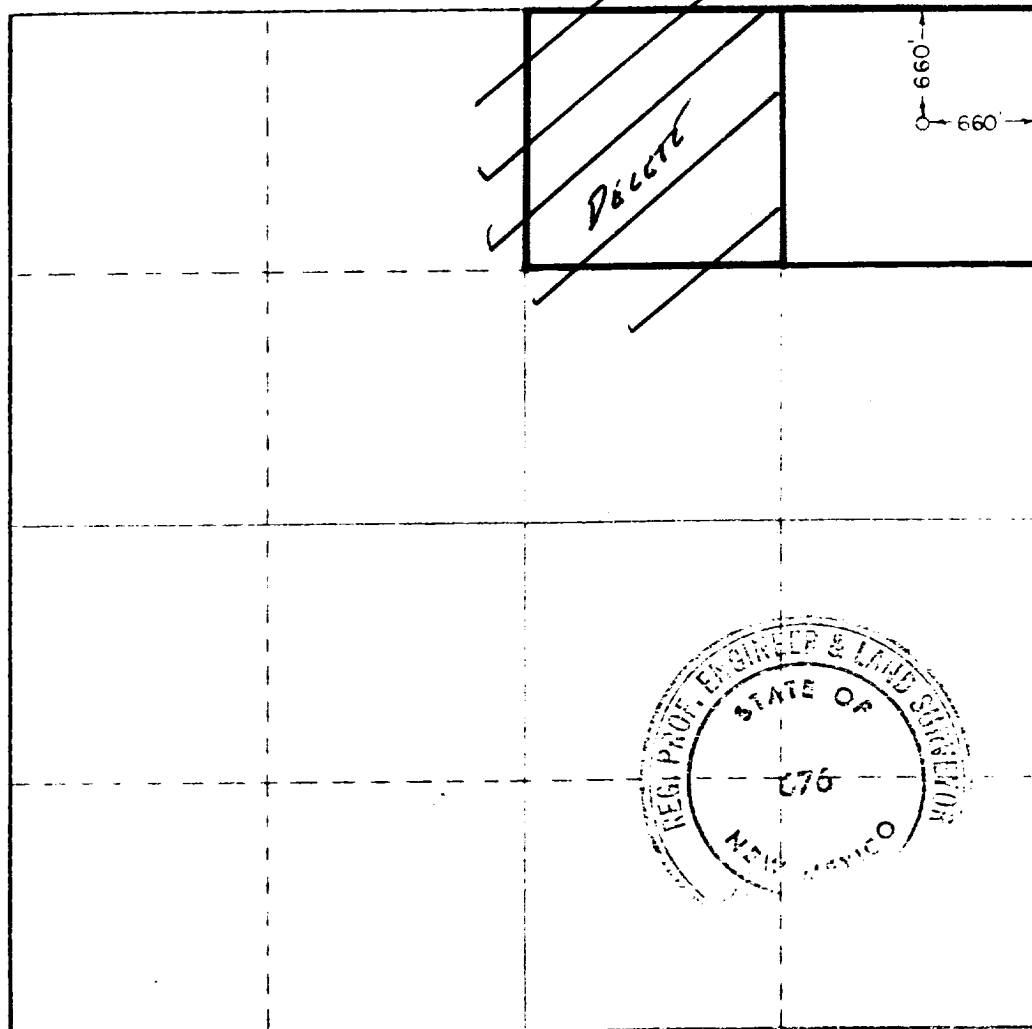
Owner: WAINOCO, INC.		Lease: Ingram 2 "33"		Acres: 2	
Tract Letter: A	Section: 33	Township: 8 South	Range: 37 East	County: Roosevelt	
Actual Well Location of Well:					
660 feet from the north line and		660 feet from the east line			
Ground Level Elev.: 4007.1	Producing Formation: San Andres	Pool: UNDESIGNATED	Estimated Acreage: 20.40		

1. Outline the acreage dedicated to the subject well by colored pencil or hatchure marks on the plat below.
2. If more than one lease is dedicated to the well, outline each and identify the ownership thereof (both as to working interest and royalty).
3. If more than one lease of different ownership is dedicated to the well, have the interests of all owners been consolidated by communitization, unitization, force-pooling, etc?

☐ Yes ☐ No If answer is "yes," type of consolidation _____

If answer is "no," list the owners and tract descriptions which have actually been consolidated (Use reverse side of this form if necessary.) _____

No allowable will be assigned to the well until all interests have been consolidated (by communitization, unitization, forced-pooling, or otherwise) or until a non-standard unit, eliminating such interests, has been approved by the Commission.



CERTIFICATION

I hereby certify that the information contained herein is true and complete to the best of my knowledge and belief.

John W. Mulloy
John W. Mulloy

Agent

Wainoco, Inc.

12-29-76

I hereby certify that the well location shown on this plat was plotted from field notes of actual surveys made by me or under my supervision, and that the same is true and correct to the best of my knowledge and belief.

Date Surveyed:

Dec. 23, 1976

Registered Professional Engineer and/or Land Surveyor

John W. West
John W. West

676

0 330 660 990 1320 1650 1980 2310 2640 2970 3300 3630 3960 4290 4620 4950 5280 5610 5940 6270 6600

RECEIVED

FEB 1977

60-100000-1
100000-1

Application for Drilling
Wainoco, Inc.
Ingram-Federal "33" Well #2
Roosevelt County, New Mexico

In conjunction with permitting subject well for drilling, in Sec. 33 Township 8 South, Range 37 East, N.M.P.M. Roosevelt County, New Mexico, Wainoco, Inc., submits the following points of pertinent information in accordance with US.G.S. letter of July 1, 1976.

1. The geologic surface formation is Ogallala.
2. The estimated tops of geologic markers are as follows:

Rustler	2310
Salt	2370
Base Salt	2750
San Andres	4090
Pi Marker	4685
3. The depth at which water, oil or gas are expected to be encountered is:

4835'
4. Casing Program:

8 5/8", 28#, K-55, to 375' (used) cement w/500 sx.
4 1/2", 10.5#, J-55 to 5050' (used) cement w/300 sx.
5. Blowout Preventors:

Ram type Series 900 with double Hydraulic rams. This is a Schaeffer blowout preventor (2000# working pressure, 4000# test). The fill, kill and choke lines are indicated on the BOP specification sheet.
6. Circulating Medium

Steel and earthern pits will be used to hole mud and cuttings and the drilling fluids as follows:

Natural mud to 4500', paper to control seepage and reduce filter cake in Santa Rosa. Reduce water loss to 10 and viscosity to 36 from 4500' to T.D. for coring.

RECEIVED

FEB 1977

CLERK - [illegible]
1955, 1. 12.

Application for Drilling
Wainoco, Inc. - Ingram-Federal "33" Well #2
Page 2

7. The rig will be equipped with safety device such as kelly cock, drill pipe float, full opening stabbing valve, inside drill pipe BOP, etc. Operational tests will be run weekly and results noted on tour sheets.
8. One drill stem test will be conducted at depth to be determined. Cores will be cut from 4835-4940 and 4555-5005'.
9. No abnormal pressures or temperatures or potential hazards are expected to be encountered.
10. Anticipated starting date is 1-1-77 with completion of operations expected to be on or about 1-15-77.

RECEIVED

FEB 17 1977

OIL CONSERVATION COMM.
ROBES. N. M.

1 - 7 station Koomey Accumulator

1 - Koomey Remote Stand

5000 WP Manifold

1 - 10⁰ Shaeffer Double BOP 900 Series, 3000 WP

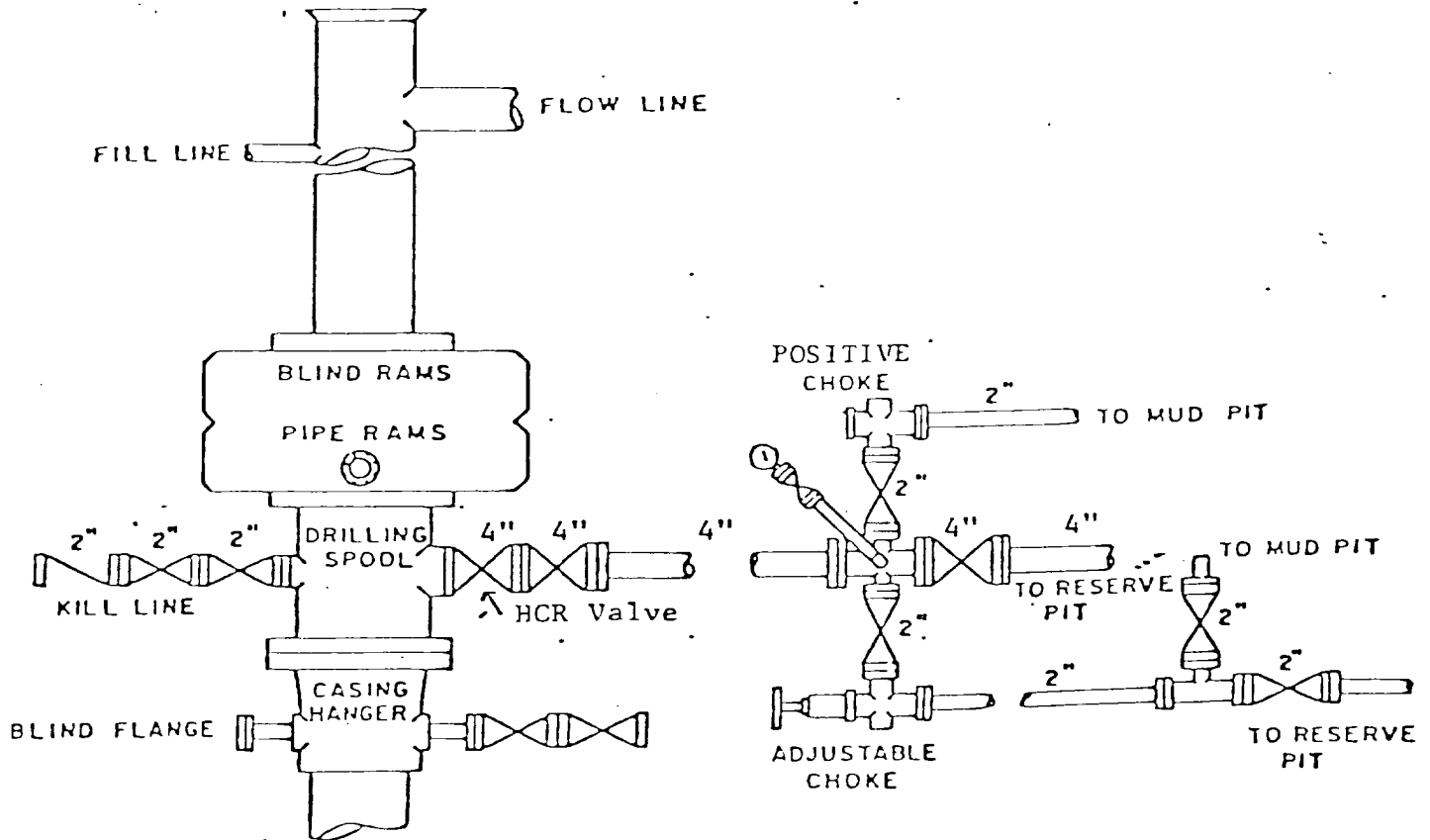


Exhibit "D"
BOP Sketch
Wainoco, Inc.

Well #2

Ingram Federal "33"

RECEIVED

1077

OIL & GAS

U. S. GEOLOGICAL SURVEY
P. O. Box 1157
Hobbs, New Mexico 88240

HOBBS DISTRICT

Wainoco Inc.
2 Ingram Federal "33"
NE $\frac{1}{4}$ NE $\frac{1}{4}$ sec. 33-8S-37E
Roosevelt County, N. M.

Above Data Required on Well Sign

CONDITIONS OF APPROVAL

1. Drilling operations authorized are subject to the attached sheet for general requirements for drilling and producing operations.
2. Notify this office (telephone (505) 393-3612) when the well is spudded and in sufficient time for a representative to witness cementing operations.
3. Immediate notice is required of all blowouts, fires, spills, and accidents involving life-threatening injuries or loss of life.
4. Secure prior approval before changing the approved drilling program or commencing plugging operations, plug-back work, casing repair work, or corrective cementing operations.
5. Blowout prevention equipment is to be installed, tested, and in working order before drilling below the surface casing and shall be maintained ready for use until drilling operations are completed.
6. A kill-line is to be properly installed and is not to be used as a fill-up line.
7. Blowout preventers are to have proper casing rams when running casing.
8. Drill string safety valve(s) to fit all pipe in the drill string to be maintained on the rig floor while drilling operations are in progress.
9. Blowout prevention drills are to be conducted as necessary to assure that equipment is operational and that each crew is properly trained to carry out emergency duties. All BOP tests and drills are to be recorded on the driller's log.
10. Operations must be in compliance with the provisions of the landowner agreement concerning surface disturbance and surface restoration.
11. 8-5/8" surface casing should be set in the Rustler Anhydrite formation and cement circulated to the surface. If surface casing is set at a lesser depth, the 5-1/2" casing must be cemented from the casing shoe to the surface, or cemented to the surface through a stage tool set at least 50 feet below the top of the Rustler, after cementing around the shoe with the proposed 300 sacks.

RECEIVED

FEB 14 1977
OIL CONSERVATION DIVISION
WASHINGTON, D. C.