

**MEXICO OIL CONSERVATION COMMISSION
WELL LOCATION AND ACREAGE DEDICATION PLAT**

Form C-102
Supersedes C-128
Effective 1-1-65

All distances must be from the outer boundaries of the Section.

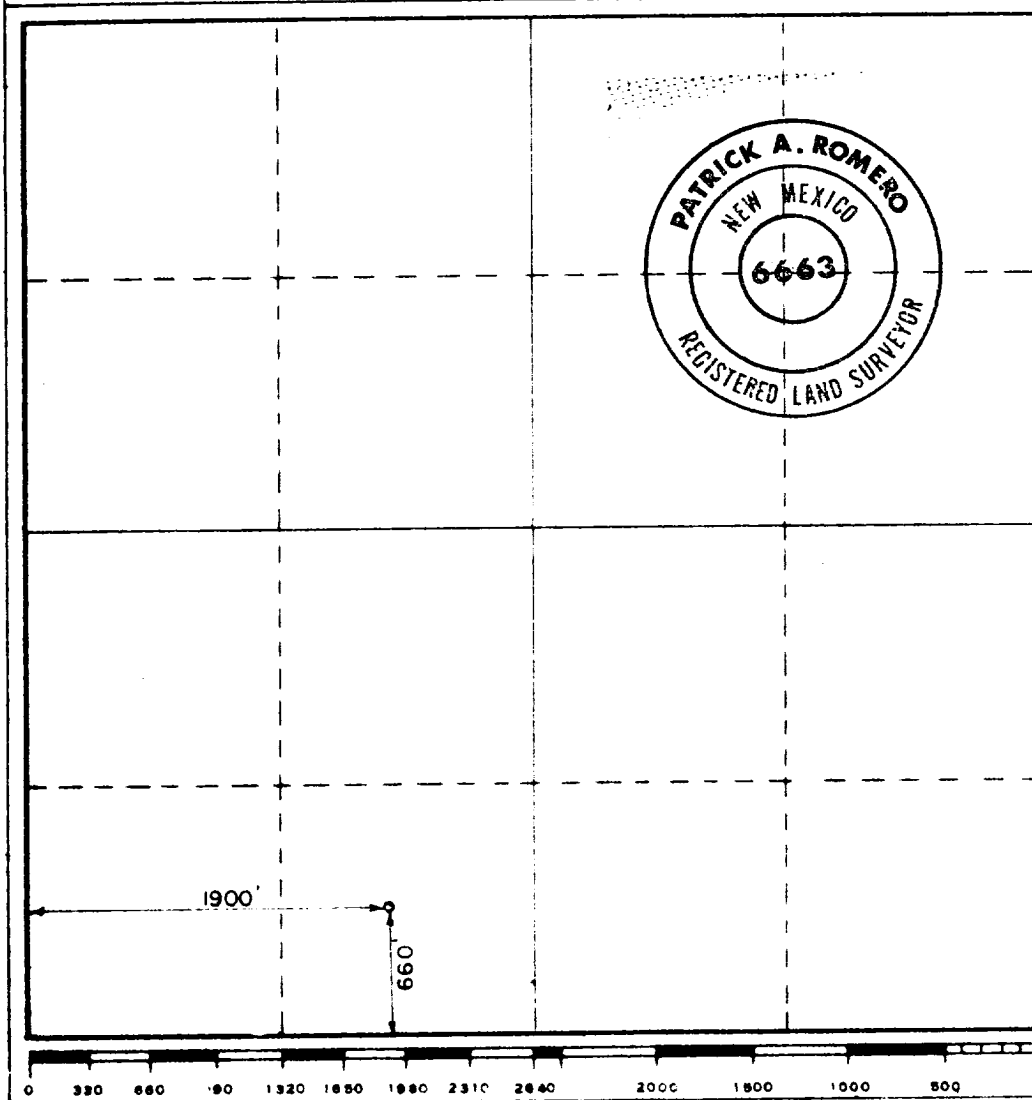
Operator Sundance Oil Co.			Lease USGS		Well No. 2
Unit Letter N	Section 31	Township 7 South	Range 32 East	County Roosevelt	
Actual Footage Location of Well: 660 feet from the South line and 1900 feet from the West line					
Ground Level Elev. 4428.1	Producing Formation San Andres	Pool Tomahawk, San Andres		Dedicated Acreage: 40 Acres	

1. Outline the acreage dedicated to the subject well by colored pencil or hachure marks on the plat below.
2. If more than one lease is dedicated to the well, outline each and identify the ownership thereof (both as to working interest and royalty).
3. If more than one lease of different ownership is dedicated to the well, have the interests of all owners been consolidated by communitization, unitization, force-pooling, etc?

☐ Yes ☐ No If answer is "yes," type of consolidation _____

If answer is "no," list the owners and tract descriptions which have actually been consolidated. (Use reverse side of this form if necessary.) _____

No allowable will be assigned to the well until all interests have been consolidated (by communitization, unitization, forced-pooling, or otherwise) or until a non-standard unit, eliminating such interests, has been approved by the Commission.



CERTIFICATION

I hereby certify that the information contained herein is true and complete to the best of my knowledge and belief.

Name
Richard O. Dimit

Position
Vice President, Production

Company
Sundance Oil Company

Date
May 12, 1980

I hereby certify that the well location shown on this plat was plotted from field notes of actual surveys made by me or under my supervision, and that the same is true and correct to the best of my knowledge and belief.

Date Surveyed
4-7-1980

Registered Professional Engineer and/or Land Surveyor

Patrick A. Romero
Certificate No. **JOHN W. WEST 876**
PATRICK A. ROMERO 6663
Ronald J. Eidson 3239