

COPY TO O. C. C

SUBMIT IN TRIPLICATE*

Form approved.
Budget Bureau No. 42-R1425.UNITED STATES
DEPARTMENT OF THE INTERIOR

GEOLOGICAL SURVEY

RECEIVED

30-041-20576
5. LEASE DESIGNATION AND SERIAL NO.

NM 23304

6. IF INDIAN, ALLOTTEE OR TRIBE NAME

APPLICATION FOR PERMIT TO DRILL, DEEPEN, OR PLUG BACK

1a. TYPE OF WORK

DRILL ☒DEEPEN ☐PLUG BACK ☐

b. TYPE OF WELL

OIL
WELL ☒GAS
WELL ☐OTHER ☐U. S. GEOLOGICAL SURVEY
HOBBS, NEW MEXICOSINGLE ☒MULTIPLE
ZONE ☐

2. NAME OF OPERATOR

READING & BATES PETROLEUM CO.

3. ADDRESS OF OPERATOR

1100 Mid - Continent Bldg. Tulsa, Oklahoma 74103

4. LOCATION OF WELL (Report location clearly and in accordance with any State requirements.)

At surface

1980' F.S.L.

660' F.E.L.

Sec. 21-T7S-R34E

At proposed prod. zone

14. DISTANCE IN MILES AND DIRECTION FROM NEAREST TOWN OR POST OFFICE*

8 mi. Northwest of Milnesand, New Mexico

15. DISTANCE FROM PROPOSED*

LOCATION TO NEAREST

PROPERTY OR LEASE LINE, FT.

(Also to nearest drig. unit line, if any)

660'

16. NO. OF ACRES IN LEASE

160

17. NO. OF ACRES ASSIGNED

TO THIS WELL

40

18. DISTANCE FROM PROPOSED LOCATION*

TO NEAREST WELL, DRILLING, COMPLETED,

OR APPLIED FOR, ON THIS LEASE, FT.

19. PROPOSED DEPTH

4800'

20. ROTARY OR CABLE TOOLS

Rotary

21. ELEVATIONS (Show whether DF, RT, GR, etc.)

4292' ungraded GR

22. APPROX. DATE WORK WILL START*

Feb. 1, 1981

23.

PROPOSED CASING AND CEMENTING PROGRAM

SIZE OF HOLE	SIZE OF CASING	WEIGHT PER FOOT	SETTING DEPTH	QUANTITY OF CEMENT
11"	8-5/8"	24#	500'	350 sx - Circulated to surface.
7-7/8"	5-1/2"	14#	4800'	Through shoe W/450 sx to base of salt & through DV tool at approx. 2300' (top of salt) with 400 sx.

Drill a well at the above location to a T.D. of 4800' for the purpose of testing all potential oil and/or gas zones encountered. Primary objective is the San Andres @ 4245'. 500' of 8-5/8" surface casing will be set and cemented to surface. Blow out preventers and surface casing will be tested. A 7-7/8" hole will be drilled to T.D. Electric logs will be run. If productive, 5-1/2" casing will be set and cemented to adequately protect the productive zone, and salt formations. If non-productive, well will be P&A as per instructions by USGS & New Mexico Oil Conservation Commission Instructions and to fill pits and restore land to its near original condition as soon as possible.

Federal Bond #1-T-345505

IN ABOVE SPACE DESCRIBE PROPOSED PROGRAM: If proposal is to deepen or plug back, give data on present productive zone and proposed new productive zone. If proposal is to drill or deepen directionally, give pertinent data on subsurface locations and measured and true vertical depths. Give blowout preventer program, if any.

24.

SIGNED

Donald J. Ripgen

TITLE

Prod. Supt.

Prod. Clerk

1-5-81

(This space for Federal or State office use)

PERMIT NO.

APPROVAL DATE

ACTING DISTRICT ENGINEER

FEB 04 1981

APPROVED BY

TITLE

DATE

CONDITIONS OF APPROVAL, IF ANY:

*See Instructions On Reverse Side

NEW MEXICO OIL CONSERVATION COMMISSION
WELL LOCATION AND ACREAGE DEDICATION PLAT

Form C-102
Supersedes C-128
Effective 1-1-65

All distances must be from the outer boundaries of the Section.

Operator READING & BATES PETROLEUM CO.		Lease R & B FEDERAL 21		Well No. 1
Unit Letter J	Section 21	Township T-7-S	Range R-34-E	County ROOSEVELT CO., NEW MEXICO
Actual Footage Location of Well: 1980' feet from the South line and 660' feet from the East line				
Ground Level Elev. 4292'	Producing Formation San Andres	Pool Chaveroo	Dedicated Acreage: 40 Acres	

1. Outline the acreage dedicated to the subject well by colored pencil or hachure marks on the plat below.
2. If more than one lease is dedicated to the well, outline each and identify the ownership thereof (both as to working interest and royalty).
3. If more than one lease of different ownership is dedicated to the well, have the interests of all owners been consolidated by communitization, unitization, force-pooling, etc?

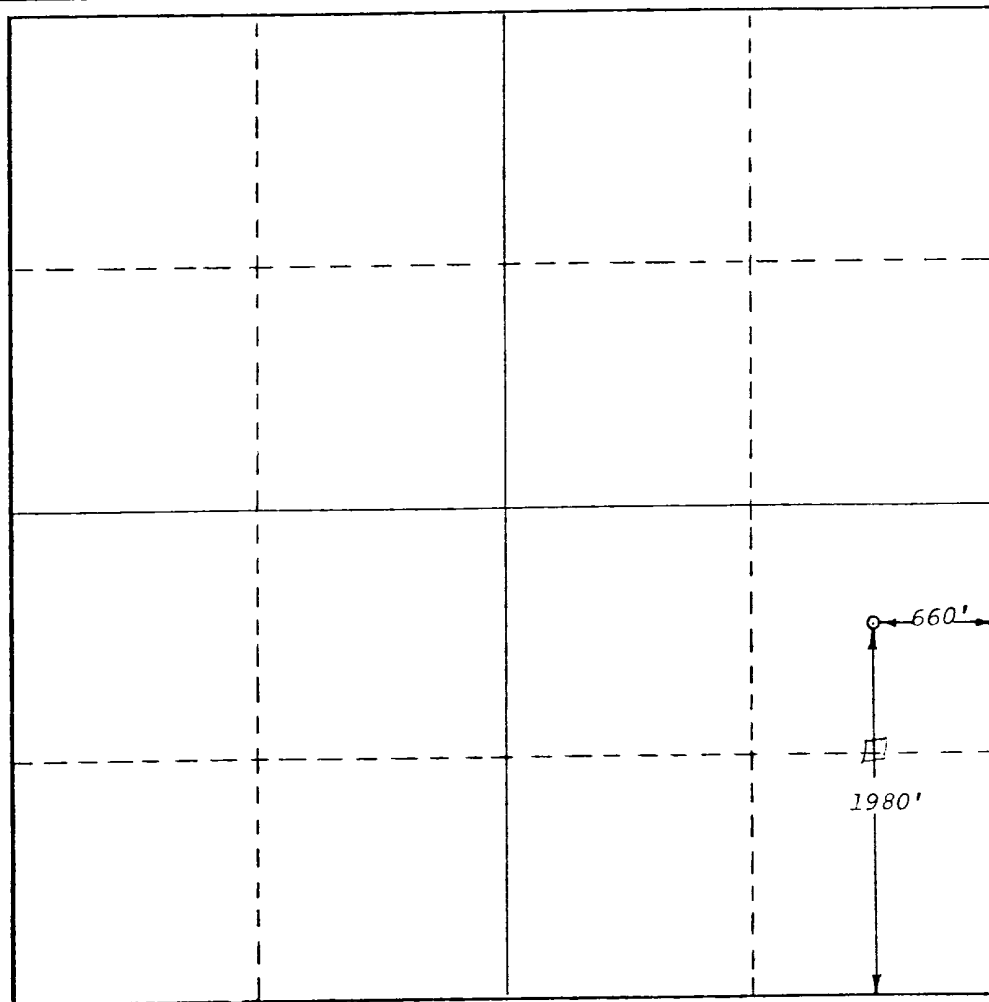
RECEIVED

U. S. GEOLOGICAL SURVEY
HOBBS, NEW MEXICO

☐ Yes ☐ No If answer is "yes," type of consolidation _____

If answer is "no," list the owners and tract descriptions which have actually been consolidated. (Use reverse side of this form if necessary.) _____

No allowable will be assigned to the well until all interests have been consolidated (by communitization, unitization, forced-pooling, or otherwise) or until a non-standard unit, eliminating such interests, has been approved by the Commission.



CERTIFICATION

I hereby certify that the information contained herein is true and complete to the best of my knowledge and belief.

Gary D. Boswell
Name

Position

Company

Date

I hereby certify that the well location shown on this plat was plotted from field notes of actual surveys made by me or under my supervision, and that the same is true and correct to the best of my knowledge and belief.

December 1980

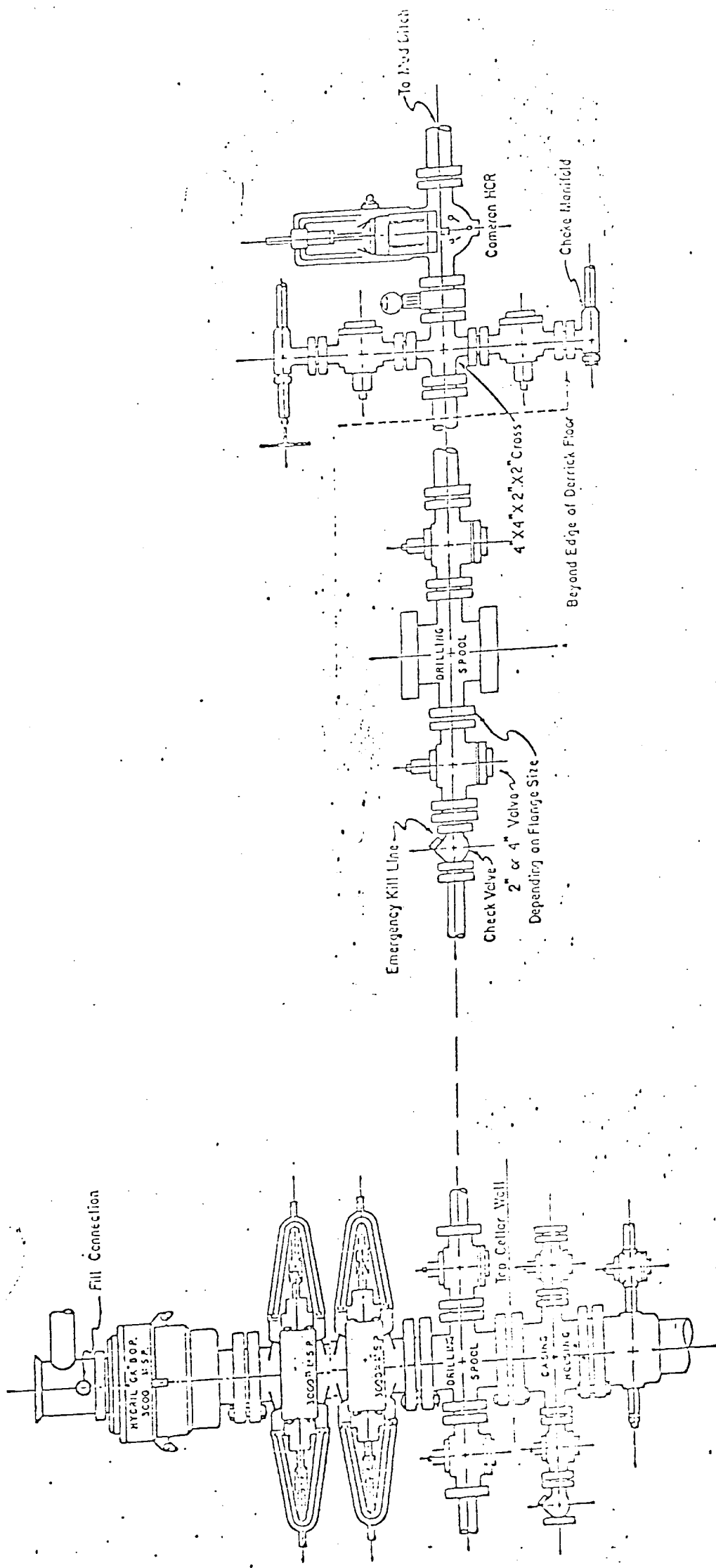
Date Surveyed

Gary D. Boswell

Registered Professional Engineer
and/or Land Surveyor

Gary D. Boswell
Certificate No.

6689



EL "F"
AMERON

3,000 PSI WORKING PRESSURE
BLOWOUT PREVENTER HOOK-UP

Series 900 Flanges, or Better

SCHEMATIC OF BOP
HOOKUP