

30-041-20610

STATE OF NEW MEXICO  
ENERGY AND MINERALS DEPARTMENTOIL CONSERVATION DIVISION  
P. O. BOX 2088  
SANTA FE, NEW MEXICO 87501Form C-101  
Revised 10-1-78

NO. OF COPIES RECEIVED	
DISTRIBUTION	
SANTA FE	
FILE	
U.S.G.S.	
LAND OFFICE	
OPERATOR	

5A. Indicate Type of Lease  
STATE ☐ FEE ☒

5. State Oil &amp; Gas Lease No.

## APPLICATION FOR PERMIT TO DRILL, DEEPEN, OR PLUG BACK

a. Type of Work

DRILL ☒DEEPEN ☐PLUG BACK ☐

b. Type of Well

OIL WELL ☒GAS WELL ☐

OTHER

SINGLE ZONE ☐MULTIPLE ZONE ☐

c. Name of Operator

Enserch Exploration, Inc.

d. Address of Operator

1230 River Bend Drive - Suite 136 - Dallas, Texas 75247

e. Location of Well

UNIT LETTER L LOCATED 1980 FEET FROM THE South LINEAND 660FEET FROM THE West LINE OF SEC. 21 TWP. 4-S RGE. 33-E NMPM

7. Unit Agreement Name

8. Farm or Lease Name

Franse ETAL

9. Well No.

1

10. Field and Pool, or Wildcat

UNDESIGNATED

12. County

Roosevelt

19. Proposed Depth

8300'

19A. Formation

Mississippian Lm

20. Rotary or C.T.

Rotary

21. Elevations (show whether OF, RT, etc.)

4323.4 GL

21A. Kind &amp; Status Plug Bond

American Insurance

5171534

21B. Drilling Contractor

Republic Drilling &amp; Svc.

22. Approx. Date Work will start

August 15, 1981

23.

## PROPOSED CASING AND CEMENT PROGRAM

SIZE OF HOLE	SIZE OF CASING	WEIGHT PER FOOT	SETTING DEPTH	SACKS OF CEMENT	EST. TOP
17-1/2"	13-3/8"	48#	350'	400	Circ. to Surface
12-1/4"	9-5/8"	36#	2000'	1150	Circ. to Surface
8-3/4"	5-1/2"	15.5#&17.0#	8300'	960	6000'

Drill to 8300' in search of oil. Will set 13-3/8" surface casing. A 13-3/8", 3000 ps bradenhead and a 12", 3000 psi BOP will be installed before drilling the intermediate hole. After 9-5/8" casing is set, a 12", 3000 psi double hydraulic BOP and a 12", 3000 psi Hydril will be used from 2000' to total depth.

APPROVAL VALID FOR 180 DAYS  
PERMIT EXPIRES 2/3/82  
UNLESS DRILLING UNDERWAY

4. ABOVE SPACE DESCRIBE PROPOSED PROGRAM: IF PROPOSAL IS TO DEEPEN OR PLUG BACK, GIVE DATA ON PRESENT PRODUCTIVE ZONE AND PROPOSED NEW PRODUCTIVE ZONE. GIVE BLOWOUT PREVENTER PROGRAM, IF ANY.

hereby certify that the information above is true and complete to the best of my knowledge and belief.

signed C. H. Peoples Title Regional Drilling Manager Date August 4, 1981

(This space for State Use)

Only Sign  
Jerry Saxton  
District Supervisor

APPROVED BY Jerry Saxton TITLE SUPERVISOR DISTRICT DATE AUG 11 1981

CONDITIONS OF APPROVAL, IF ANY:

**N' MEXICO OIL CONSERVATION COMMISS'**  
**WELL LOCATION AND ACREAGE DEDICATION PLAT**

Form C-102  
 Supersedes C-128  
 Effective 1-1-65

All distances must be from the outer boundaries of the Section

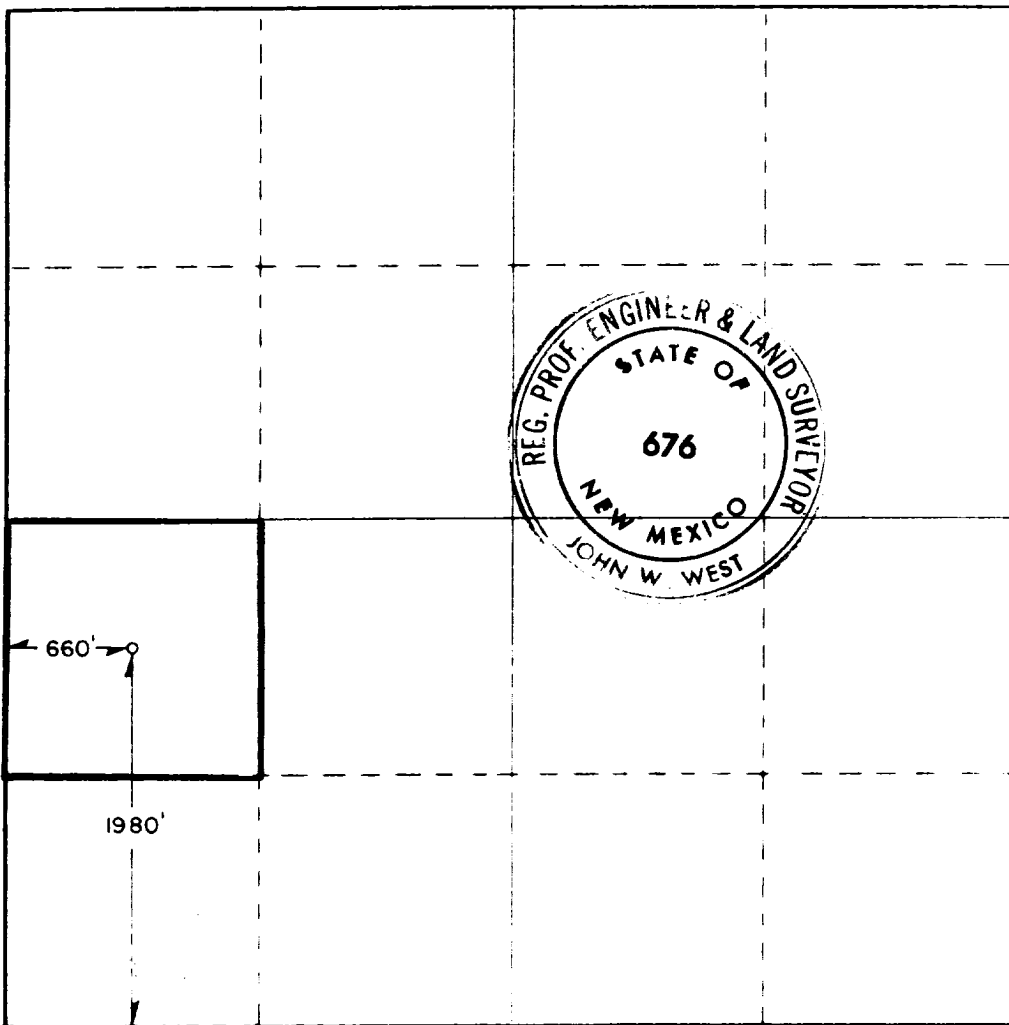
Operator <b>ENSERCH EXPLORATION, INC.</b>			Lease <b>FRANSE ETAL</b>		Well No. <b>1</b>
Unit Letter <b>L</b>	Section <b>21</b>	Township <b>4 South</b>	Range <b>33 East</b>	County <b>Roosevelt</b>	
Actual Footage Location of Well: <b>1980</b> feet from the <b>South</b> line and <b>660</b> feet from the <b>West</b> line					
Ground Level Elev. <b>4323.4</b>	Producing Formation <b>Mississippian Lime</b>	Pool <b>UNDESIGNATED</b>		Estimated Acreage <b>40</b>	

1. Outline the acreage dedicated to the subject well by colored pencil or hachure marks on the plat below.
2. If more than one lease is dedicated to the well, outline each and identify the ownership thereof (both as to working interest and royalty).
3. If more than one lease of different ownership is dedicated to the well, have the interests of all owners been consolidated by communitization, unitization, force-pooling, etc?

☐ Yes    ☐ No    If answer is "yes," type of consolidation \_\_\_\_\_

If answer is "no," list the owners and tract descriptions which have actually been consolidated (Use reverse side of this form if necessary.) \_\_\_\_\_

No allowable will be assigned to the well until all interests have been consolidated (by communitization, unitization, forced-pooling, or otherwise) or until a non-standard unit, eliminating such interests, has been approved by the Commission.



**CERTIFICATION**

I hereby certify that the information contained herein is true and complete to the best of my knowledge and belief.

Name C. H. Peeples  
 Position Regional Drilling Manager  
 Company Enserch Exploration, Inc.  
 Date August 4, 1981

I hereby certify that the well location shown on this plat was plotted from field notes of actual surveys made by me or under my supervision, and that the same is true and correct to the best of my knowledge and belief.

Date Surveyed 7/31/81  
 Registered Professional Engineer  
 Title Professional Engineer  
 Signature John W. West  
 Certificate No. JOHN W. WEST 676  
PATRICK A. ROMERO 6663  
Ronald J. Eidson 3239

