

30-041-20639

STATE OF NEW MEXICO  
METEOR AND MINERALS DEPARTMENT

OIL CONSERVATION DIVISION

P. O. BOX 2088  
SANTA FE, NEW MEXICO 87501

Form C-101  
Revised 10-1-78

NO. OF COPIES RECEIVED	
DISTRIBUTION	
SANTA FE	
FILE	
U.S.G.S.	
LAND OFFICE	
OPERATOR	

5A. Indicate Type of Lease  
STATE ☐ FEDERAL ☒

5. More Oil & Gas Lease No.

APPLICATION FOR PERMIT TO DRILL, DEEPEN, OR PLUG BACK

a. Type of Work

DRILL ☒

DEEPEN ☐

PLUG BACK ☐

b. Type of Well

OIL WELL ☒

GAS WELL ☐

OTHER

SINGLE ZONE ☒

MULTIPLE ZONE ☐

c. Name of Operator

Enserch Exploration, Inc.

d. Address of Operator

1230 River Bend Drive - Suite 136 - Dallas, Texas 75247

e. Location of Well

UNIT LEYES H LOCATED 2130 FEET FROM THE North LINE

660

FEET FROM THE East LINE OF SEC. 817 TWP. 4-S R. 33-E

7. Unit Agreement Terms

8. Name of Lease Owner

Pearl Jordan

9. Well No.

5

10. Field and Pool, or Wildcat

Peterson Mississippian

UNDESIGNATED

11. County

Roosevelt

1. Depth of hole in feet, inches

4388.3" GR

2. Name of State Filing Bond

American Insurance 5171534

3. Depth of casing in feet

8300'

MISSISSIPPIAN  
Fusselman Dolo

Rotary

4. Drilling Contractor

Republic Drilling

5. Approx. Date of completion

January 21, 1982

PROPOSED CASING AND CEMENT PROGRAM

SIZE OF HOLE	SIZE OF CASING	WEIGHT PER FOOT	SETTING DEPTH	BACKS OF CEMENT	EST. TOP
17-1/2"	13-3/8"	48#	350'	400	Circ. to surface
12-1/4"	9-5/8"	36#	2000'	1150	Circ. to surface
8-3/4"	5-1/2"	15.5# & 17#	8300'	950	6000'

Drill to 8200 feet in search of oil. Will set 13-3/8 inch surface casing. A 13-3/8", 3000 psi bradenhead and a 12 inch, 3000 psi BOP will be installed before drilling the intermediate hole. After 9-5/8 inch casing is set, a 12 inch, 3000 psi double hydraulic BOP and a 12 inch, 3000 psi Hydril will be used from 2000 feet to total depth.

APPROVAL VALID FOR 180 DAYS  
PERMIT EXPIRES 7/20/82  
UNLESS DRILLING UNDERWAY

ABOVE SPACE DESCRIBE PROPOSED PROGRAM; IF PROPOSAL IS TO DEEPEN OR PLUG BACK, GIVE DATA ON PRESENT PRODUCTIVE ZONE AND PROPOSED NEW PRODUCTIVE ZONE. GIVE FLOWOUT PREVENTER PROGRAM, IF ANY.

I hereby certify that the information above is true and complete to the best of my knowledge and belief.

signed C. H. Peeples Title Regional Drilling Manager Date January 20, 1982

(This space for State Use)

Drilled Signed By

Jerry Sexton

APPROVED BY

Dist. 1, State

TITLE

DATE

JAN 20 1982

CONDITIONS OF APPROVAL, IF ANY

NEW MEXICO OIL CONSERVATION COMMISSION  
WELL LOCATION AND ACREAGE DEDICATION PLAT

Form C-122  
Supersedes C-122  
Effective 1-1-65

All distances must be from the outer boundaries of the Section

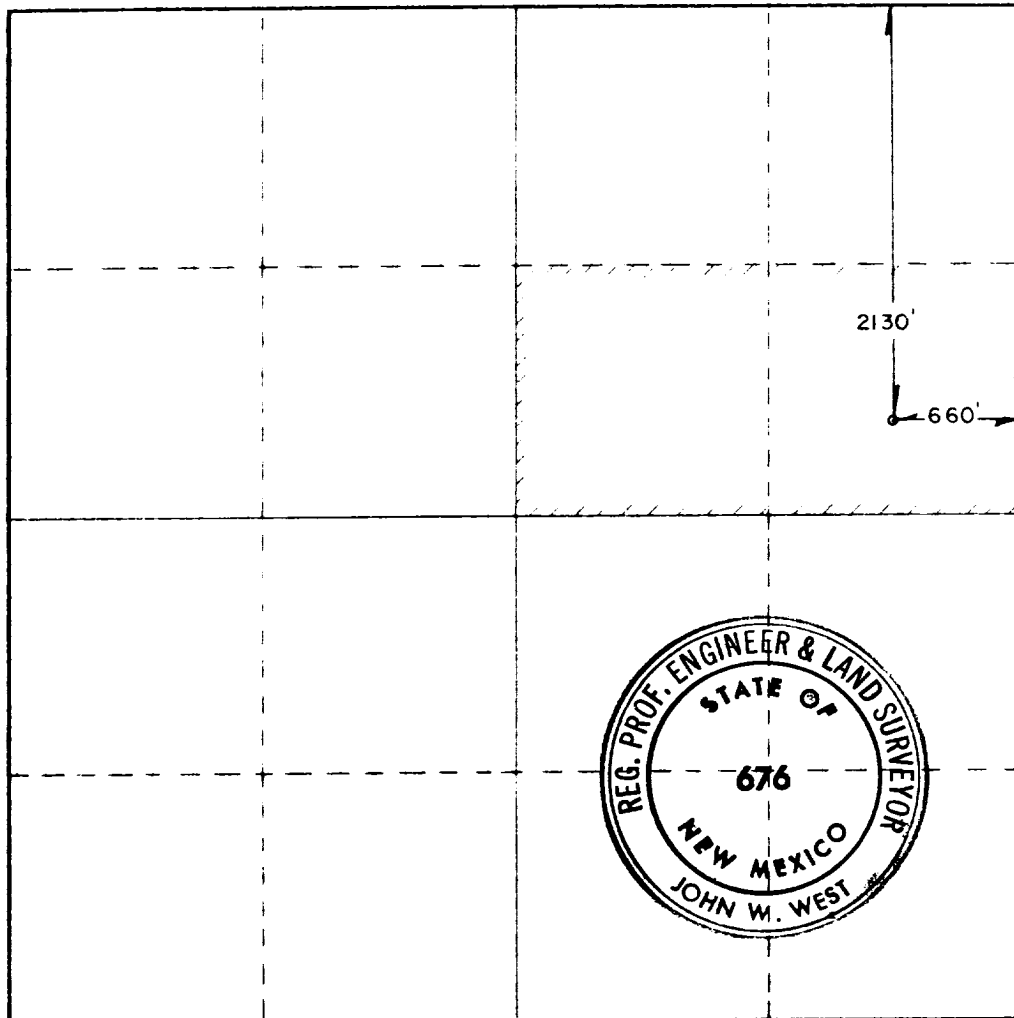
Operator <b>Enserch Exploration, Inc.</b>			Lease <b>Pearl Jordan</b>		Well No. <b>5</b>
Tract Letter <b>H</b>	Section <b>17</b>	Township <b>4 South</b>	Range <b>33 East</b>	County <b>Roosevelt</b>	
Actual For Sale Location of Well: <b>2130</b> feet from the <b>North</b> line and <b>660</b> feet from the <b>East</b> line					
Ground Level Elev. <b>4388.3</b>	Producing Formation <b>Mississippian</b>		Pool <b>UNDESIGNATED Peterson Mississippian</b>	Dedicated Acreage: <b>80</b>	

1. Outline the acreage dedicated to the subject well by colored pencil or hatchure marks on the plat below.
2. If more than one lease is dedicated to the well, outline each and identify the ownership thereof (both as to working interest and royalty).
3. If more than one lease of different ownership is dedicated to the well, have the interests of all owners been consolidated by communitization, unitization, force-pooling, etc?

☐ Yes ☐ No If answer is "yes," type of consolidation \_\_\_\_\_

If answer is "no," list the owners and tract descriptions which have actually been consolidated. (Use reverse side of this form if necessary.) \_\_\_\_\_

No allowable will be assigned to the well until all interests have been consolidated (by communitization, unitization, forced-pooling, or otherwise) or until a non-standard unit, eliminating such interests, has been approved by the Commission.



CERTIFICATION

I hereby certify that the information contained herein is true and complete to the best of my knowledge and belief

*M. E. Kinchen*  
Name

**M. E. KINCHEN**  
Position

**Drilling Engineer**  
Company

**Enserch Exploration, Inc.**  
Date

**1/20/1982**

I hereby certify that the well location shown on this plat was plotted from field notes of actual surveys made by me or under my supervision, and that the same is true and correct to the best of my knowledge and belief.

Date Surveyed

**1/16/82**

Registered Professional Engineer and/or Land Surveyor

*John W. West*  
Certificate No

**JOHN W. WEST 676**  
**PATRICK A. ROMERO 6863**  
**Ronald J. Eidsen 3239**

330 660 990 1320 1650 1980 2310 2640 2970 3300 3630 3960 4290 4620 4950 5280 5610 5940 6270 6600