

30-041-20721

NO. OF COPIES RECEIVED	
DISTRIBUTION	
SANTA FE	
FILE	
U.S.G.S.	
LAND OFFICE	
OPERATOR	

NEW MEXICO OIL CONSERVATION COMMISSION

Form C-101
Revised 1-1-85

5A. Indicate Type of Lease	
STATE <input type="checkbox"/>	FEE <input checked="" type="checkbox"/>
5. State Oil & Gas Lease No.	

APPLICATION FOR PERMIT TO DRILL, DEEPEN, OR PLUG BACK

1a. Type of Work b. Type of Well OIL WELL <input type="checkbox"/> GAS WELL <input type="checkbox"/> OTHER <input type="checkbox"/>		DRILL <input checked="" type="checkbox"/> DEEPEN <input type="checkbox"/> PLUG BACK <input type="checkbox"/>		7. Unit Agreement Name	
2. Name of Operator NRM Petroleum Corporation		3. Address of Operator 600 W. Illinois, Suite 800		8. Farm or Lease Name Metzger	
4. Location of Well UNIT LETTER <u>I</u> LOCATED <u>1980</u> FEET FROM THE <u>South</u> LINE AND <u>853</u> FEET FROM THE <u>East</u> LINE OF SEC. <u>17</u> TWP. <u>7S</u> RGE. <u>34E</u> NMRM		9. Well No. 5		10. Field and Pool, or Wildcat Chaveroo San Andres	
11. Elevations (show whether DE, RL, etc.) 4312.1		12. County Roosevelt		13. Formation San Andres	
14. Estimated Depth 4500		15. Rotary or C.T. Rotary		16. Approx. Date Work will start - April 30, 1984	
17. Estimated Depth 4500		18. Estimated Depth 4500		19. Estimated Depth 4500	
20. Estimated Depth 4500		21. Estimated Depth 4500		22. Estimated Depth 4500	
23. Estimated Depth 4500		24. Estimated Depth 4500		25. Estimated Depth 4500	
26. Estimated Depth 4500		27. Estimated Depth 4500		28. Estimated Depth 4500	
29. Estimated Depth 4500		30. Estimated Depth 4500		31. Estimated Depth 4500	
32. Estimated Depth 4500		33. Estimated Depth 4500		34. Estimated Depth 4500	
35. Estimated Depth 4500		36. Estimated Depth 4500		37. Estimated Depth 4500	
38. Estimated Depth 4500		39. Estimated Depth 4500		40. Estimated Depth 4500	
41. Estimated Depth 4500		42. Estimated Depth 4500		43. Estimated Depth 4500	
44. Estimated Depth 4500		45. Estimated Depth 4500		46. Estimated Depth 4500	
47. Estimated Depth 4500		48. Estimated Depth 4500		49. Estimated Depth 4500	
50. Estimated Depth 4500		51. Estimated Depth 4500		52. Estimated Depth 4500	
53. Estimated Depth 4500		54. Estimated Depth 4500		55. Estimated Depth 4500	
56. Estimated Depth 4500		57. Estimated Depth 4500		58. Estimated Depth 4500	
59. Estimated Depth 4500		60. Estimated Depth 4500		61. Estimated Depth 4500	
62. Estimated Depth 4500		63. Estimated Depth 4500		64. Estimated Depth 4500	
65. Estimated Depth 4500		66. Estimated Depth 4500		67. Estimated Depth 4500	
68. Estimated Depth 4500		69. Estimated Depth 4500		70. Estimated Depth 4500	
71. Estimated Depth 4500		72. Estimated Depth 4500		73. Estimated Depth 4500	
74. Estimated Depth 4500		75. Estimated Depth 4500		76. Estimated Depth 4500	
77. Estimated Depth 4500		78. Estimated Depth 4500		79. Estimated Depth 4500	
80. Estimated Depth 4500		81. Estimated Depth 4500		82. Estimated Depth 4500	
83. Estimated Depth 4500		84. Estimated Depth 4500		85. Estimated Depth 4500	
86. Estimated Depth 4500		87. Estimated Depth 4500		88. Estimated Depth 4500	
89. Estimated Depth 4500		90. Estimated Depth 4500		91. Estimated Depth 4500	
92. Estimated Depth 4500		93. Estimated Depth 4500		94. Estimated Depth 4500	
95. Estimated Depth 4500		96. Estimated Depth 4500		97. Estimated Depth 4500	
98. Estimated Depth 4500		99. Estimated Depth 4500		100. Estimated Depth 4500	

PROPOSED CASING AND CEMENT PROGRAM

SIZE OF HOLE	SIZE OF CASING	WEIGHT PER FOOT	SETTING DEPTH	SACKS OF CEMENT	EST. TOP
12 1/4	8 5/8	24	1600	1100	Surface
7 7/8	4 1/2	10.50	4500	1000	1500'

Drill 12 1/4" hole to 1600' set 8 5/8" surface casing. Cement with 1100 sx to circulate.
 Drill 7 7/8" hole to top of San Andres P-2 and cut 60' core. If commercial production
 is indicated run 4 1/2" casing. Norton Rig # 7. Blow out preventers 300# LWP double
 Hydraulic.

APPROVAL VALID FOR 180 DAYS
 PERMIT EXPIRES 8/28/84
 UNLESS DRILLING UNDERWAY.

IN ABOVE SPACE DESCRIBE PROPOSED PROGRAM. IF PROPOSAL IS TO DEEPEN OR PLUG BACK, GIVE DATA ON PRESENT PRODUCTIVE ZONE AND PROPOSED NEW PRODUCTIVE ZONE. GIVE BLOWOUT PREVENTER PROGRAM, IF ANY.

I hereby certify that the information above is true and complete to the best of my knowledge and belief.

Signed Eddie W. Seay Title Operations Manager Date 2/24/84

(This space for State Use)

Eddie W. Seay

FEB 28 1984

APPROVED BY Oil & Gas Inspector TITLE Oil & Gas Inspector DATE 2/24/84
 CONDITIONS OF APPROVAL, IF ANY:

**NEW MEXICO OIL CONSERVATION COMMISSION
WELL LOCATION AND ACREAGE DEDICATION PLAT**

Form C-102
Supersedes C-128
Effective 1-1-65

All distances must be from the outer boundaries of the Section

Operator NRM PETROLEUM CORP.		Lease METZGER		Well No. 5
Tract Letter I	Section 17	Township 7 SOUTH	Range 34 EAST	County ROOSEVELT

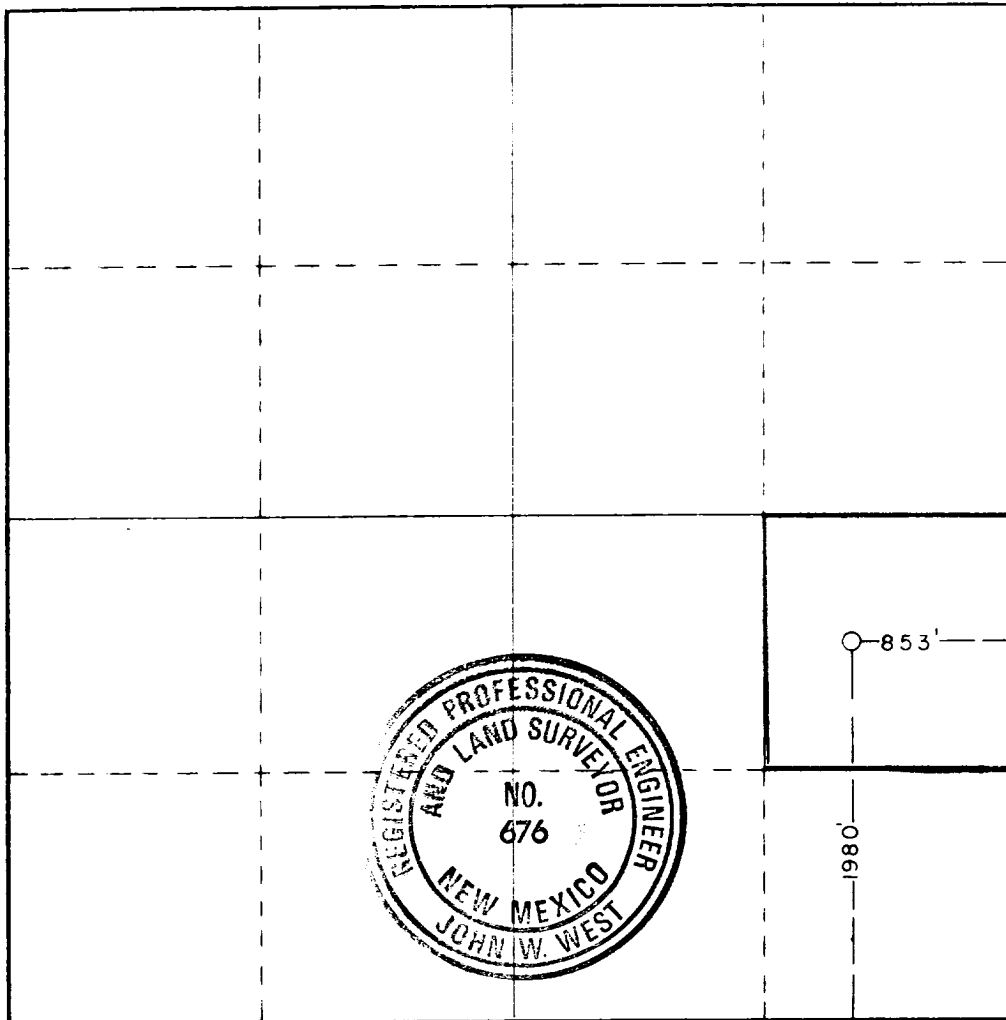
Actual Well Location of Well:				
1980	feet from the	SOUTH	line and	853
				feet from the
				EAST
Ground Level Elev. 4312.1	Producing Formation San Andres		Pool Chaveroo	Dedicated Acreage: Acres

1. Outline the acreage dedicated to the subject well by colored pencil or hatchure marks on the plat below.
2. If more than one lease is dedicated to the well, outline each and identify the ownership thereof (both as to working interest and royalty).
3. If more than one lease of different ownership is dedicated to the well, have the interests of all owners been consolidated by communitization, unitization, force-pooling, etc?

☐ Yes ☐ No If answer is "yes," type of consolidation _____

If answer is "no," list the owners and tract descriptions which have actually been consolidated. (Use reverse side of this form if necessary.) _____

No allowable will be assigned to the well until all interests have been consolidated (by communitization, unitization, forced-pooling, or otherwise) or until a non-standard unit, eliminating such interests, has been approved by the Commission.



CERTIFICATION

I hereby certify that the information contained herein is true and complete to the best of my knowledge and belief.

Cecil Tucker

Name

Cecil Tucker

Position

Operations Manager

Company

NRM Petroleum Corporation

Date

2/24/84

I hereby certify that the well location shown on this plat was plotted from field notes of actual surveys made by me or under my supervision, and that the same is true and correct to the best of my knowledge and belief.

Date Surveyed

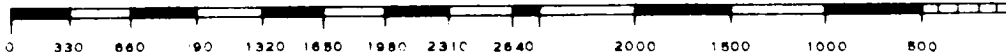
FEBRUARY 17, 1984

Registered Professional Engineer and Land Surveyor

John W. West

Certificate No. **JOHN W. WEST, 676**

RONALD J. EIDSON, 3239



RECEIVED
FEB 27 1984
O.C.D.
HOBBS OFFICE