

UNITED STATES
DEPARTMENT OF THE INTERIOR
BUREAU OF LAND MANAGEMENT

APPLICATION FOR PERMIT TO DRILL, DEEPEN, OR PLUG BACK

1a. TYPE OF WORK

DRILL ☒

DEEPEN ☐

PLUG BACK ☐

b. TYPE OF WELL

OIL WELL ☒

GAS WELL ☐

OTHER

SINGLE ZONE ☒

MULTIPLE ZONE ☐

2. NAME OF OPERATOR

IREX Operating Company

3. ADDRESS OF OPERATOR

1331 Seventeenth Street, Suite 800, Denver, Colorado 80202

4. LOCATION OF WELL (Report location clearly and in accordance with any State requirements.)

At surface

660' FSL & 1980' FEL SW/4 SE/4 Unit 0

At proposed prod. zone

Same

14. DISTANCE IN MILES AND DIRECTION FROM NEAREST TOWN OR POST OFFICE*

4 miles north of Crossroads, New Mexico

15. DISTANCE FROM PROPOSED*

LOCATION TO NEAREST

PROPERTY OR LEASE LINE, FT.

(Also to nearest drlg. unit line, if any)

660'

16. NO. OF ACRES IN LEASE

480

17. NO. OF ACRES ASSIGNED

TO THIS WELL

40

18. DISTANCE FROM PROPOSED LOCATION*

TO NEAREST WELL, DRILLING, COMPLETED,

OR APPLIED FOR, ON THIS LEASE, FT.

N/A

19. PROPOSED DEPTH

9800'

20. ROTARY OR CABLE TOOLS

Rotary

21. ELEVATIONS (Show whether DF, RT, GR, etc.)

4188' GR

22. APPROX. DATE WORK WILL START*

November 1, 1984

23.

PROPOSED CASING AND CEMENTING PROGRAM

SIZE OF HOLE	SIZE OF CASING	WEIGHT PER FOOT	SETTING DEPTH	QUANTITY OF CEMENT
17 1/2"	13 3/8"	54.50#	400'±	400 sx(Circulate)
11.0"	8 5/8"	24.00#	4000'±	1000 sx(Sufficient to Circulate)
7 7/8"	5 1/2"	15.50 & 17.0#	9800'±	Sufficient to isolate all oil, gas, and water zones.

Proposed plans are to drill to the Bough 'C' formation and test for possible commercial production of oil and gas.

Designation of Operator has been filed with the BLM in Santa Fe.

Drilling Bond has been filed under IREX Operating Company with the BLM in Santa Fe.

BOP sketch is attached.

IN ABOVE SPACE DESCRIBE PROPOSED PROGRAM: If proposal is to deepen or plug back, give data on present productive zone and proposed new productive zone. If proposal is to drill or deepen directionally, give pertinent data on subsurface locations and measured and true vertical depths. Give blowout preventer program, if any.

24.

SIGNED

Jerry W. Franklin

TITLE

Agent

DATE

(This space for Federal or State office use)

PERMIT NO.

APPROVAL DATE

S/Phil Kirk

Area Manager

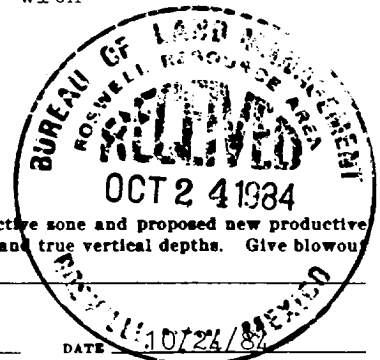
APPROVED BY

TITLE

DATE

CONDITIONS OF APPROVAL, IF ANY:

*See Instructions On Reverse Side



OIL CONSERVATION DIVISION

STATE OF NEW MEXICO
ENERGY AND MINERALS DEPARTMENT

P. O. BOX 2088
SANTA FE, NEW MEXICO 87501

Form C-102
Revised 10-1-79

All distances must be from the outer boundaries of the Section.

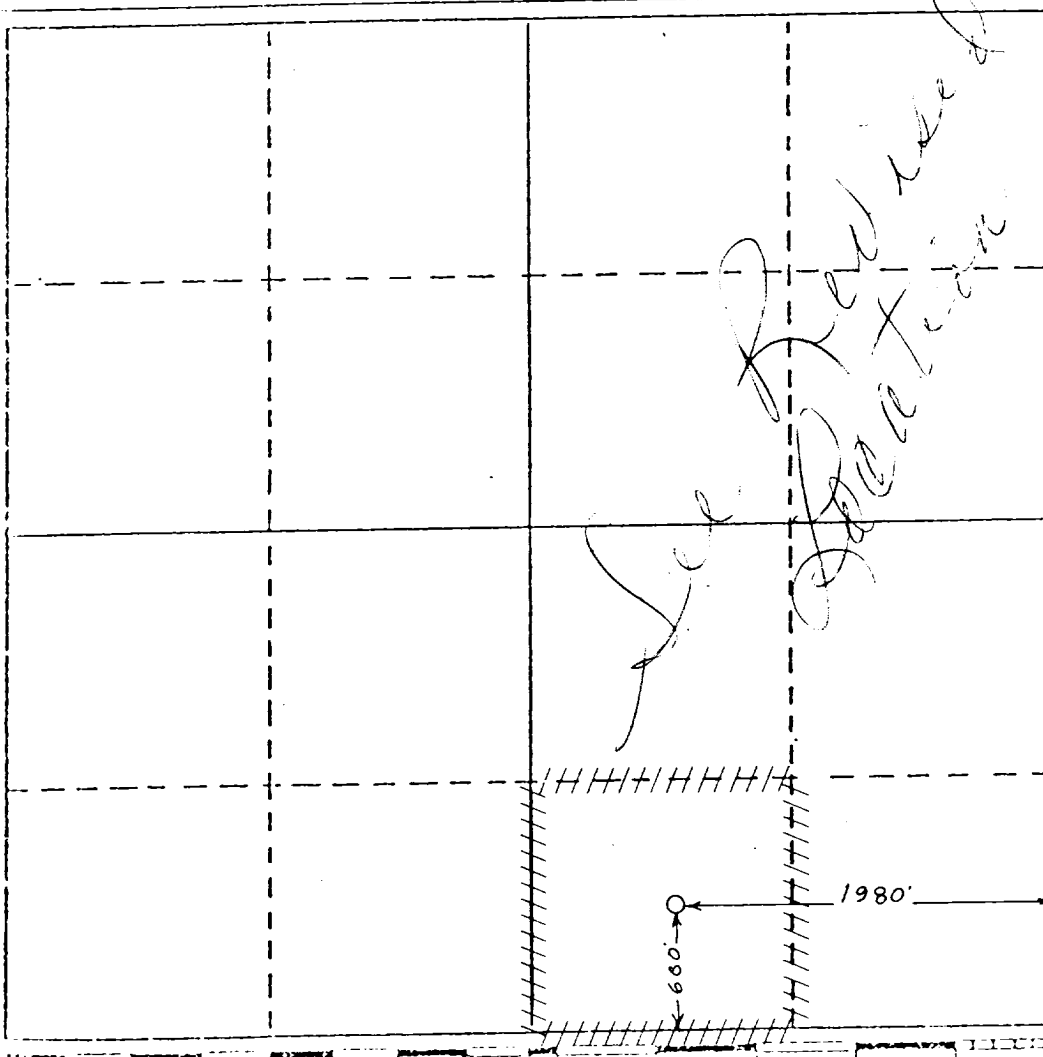
Operator IREX Operating Company			Lease VADA "33" Federal		Well No. 1
Unit Letter	Section 33	Township 8 South	Range 35 East	County Roosevelt	
Actual Postage Location of Well:					
660	feet from the South	line and	1980	feet from the East	line
Ground Level Elev. 4188	Producing Formation Pennsylvanian		Pool Allison-Bagley		Dedicated Acreage: 40 Acres

1. Outline the acreage dedicated to the subject well by colored pencil or hatchure marks on the plat below.
2. If more than one lease is dedicated to the well, outline each and identify the ownership thereof (both as to working interest and royalty).
3. If more than one lease of different ownership is dedicated to the well, have the interests of all owners been consolidated by communitization, unitization, force-pooling, etc?

☐ Yes ☐ No If answer is "yes," type of consolidation _____

If answer is "no," list the owners and tract descriptions which have actually been consolidated. (Use reverse side of this form if necessary.) _____

No allowable will be assigned to the well until all interests have been consolidated (by communitization, unitization, forced-pooling, or otherwise) or until a non-standard unit, eliminating such interests, has been approved by the Division.



CERTIFICATION

I hereby certify that the information contained herein is true and complete to the best of my knowledge and belief.

Name
Terry W. Franklin
Position
Agent
Company
IREX Operating Company
Date
10/24/84

I hereby certify that the well location shown on this plat was plotted from field notes of actual surveys made by me or under my supervision, and that the same is true and correct to the best of my knowledge and belief.

October 5, 1984

Date Surveyed
P. R. Patton
Registered Professional Engineer
and/or Land Surveyor
8112
Certificate No.