

UNITED STATES
DEPARTMENT OF THE INTERIOR
BUREAU OF LAND MANAGEMENT

APPLICATION FOR PERMIT TO DRILL, DEEPEN, OR PLUG BACK

1a. TYPE OF WORK

DRILL ☒

DEEPEN ☐

PLUG BACK ☐

b. TYPE OF WELL

OIL
WELL ☒

GAS
WELL ☐

OTHER

SINGLE
ZONE ☒

MULTIPLE
ZONE ☐

2. NAME OF OPERATOR

CHAVEROO OPERATING COMPANY, INC.

3. ADDRESS OF OPERATOR

4800 SAN FELIPE, SUITE 620, HOUSTON, TEXAS 77056

4. LOCATION OF WELL (Report location clearly and in accordance with any State requirements.)*

At surface

1310' FNL AND 1310' FWL OF SECTION 25

At proposed prod. zone

14. DISTANCE IN MILES AND DIRECTION FROM NEAREST TOWN OR POST OFFICE*

17 AIR MILES WEST OF MILNESAND, NEW MEXICO

15. DISTANCE FROM PROPOSED*

LOCATION TO NEAREST
PROPERTY OR LEASE LINE, FT.
(Also to nearest drig. unit line, if any)

1310'

16. NO. OF ACRES IN LEASE

320

17. NO. OF ACRES ASSIGNED
TO THIS WELL

40

18. DISTANCE FROM PROPOSED LOCATION*

TO NEAREST WELL, DRILLING, COMPLETED,
OR APPLIED FOR, ON THIS LEASE, FT.

919'

19. PROPOSED DEPTH

4500

20. ROTARY OR CABLE TOOLS

ROTARY

21. ELEVATIONS (Show whether DF, RT, GR, etc.)

4451.6 GL

22. APPROX. DATE WORK WILL START*

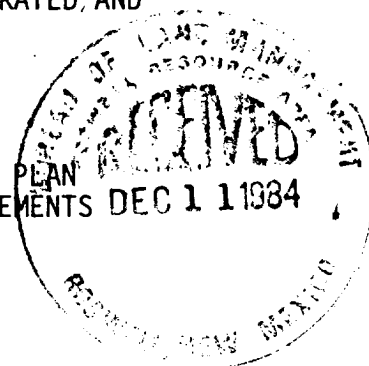
UPON APPROVAL

23. PROPOSED CASING AND CEMENTING PROGRAM

SIZE OF HOLE	SIZE OF CASING	WEIGHT PER FOOT	SETTING DEPTH	QUANTITY OF CEMENT
12-1/4"	8-5/8"	24#	1800'	SUFFICIENT TO CIRCULATE
7-7/8"	4-1/2"	10.5#	4500'	300 SACKS

AFTER SETTING PRODUCTION CASING, PAY ZONE WILL BE PERFORATED, AND
STIMULATED AS NECESSARY.

SEE ATTACHED FOR: SUPPLEMENTAL DRILLING DATA
BOP SKETCH
SURFACE USE AND OPERATIONS PLAN
SURFACE RESTORATION REQUIREMENTS



IN ABOVE SPACE DESCRIBE PROPOSED PROGRAM: If proposal is to deepen or plug back, give data on present productive zone and proposed new productive zone. If proposal is to drill or deepen directionally, give pertinent data on subsurface locations and measured and true vertical depths. Give blowout preventer program, if any.

24.

SIGNED

Arthur R. Brown

TITLE

Agent

DATE NOVEMBER 21, 1984

(This space for Federal or State office use)

PERMIT NO.

APPROVAL DATE

S/ Tom Hewitt, Acting

Area Manager

APPROVED BY

TITLE

DATE

12-31-84

CONDITIONS OF APPROVAL, IF ANY:

*See Instructions On Reverse Side

RECEIVED

JAN -2 1985

O.C.D.
HOBBS OFFICE

**NEW MEXICO OIL CONSERVATION COMMISSION
WELL LOCATION AND ACREAGE DEDICATION PLAT**

Form C-102
Supersedes C-128
Effective 1-1-85

All distances must be from the outer boundaries of the Section.

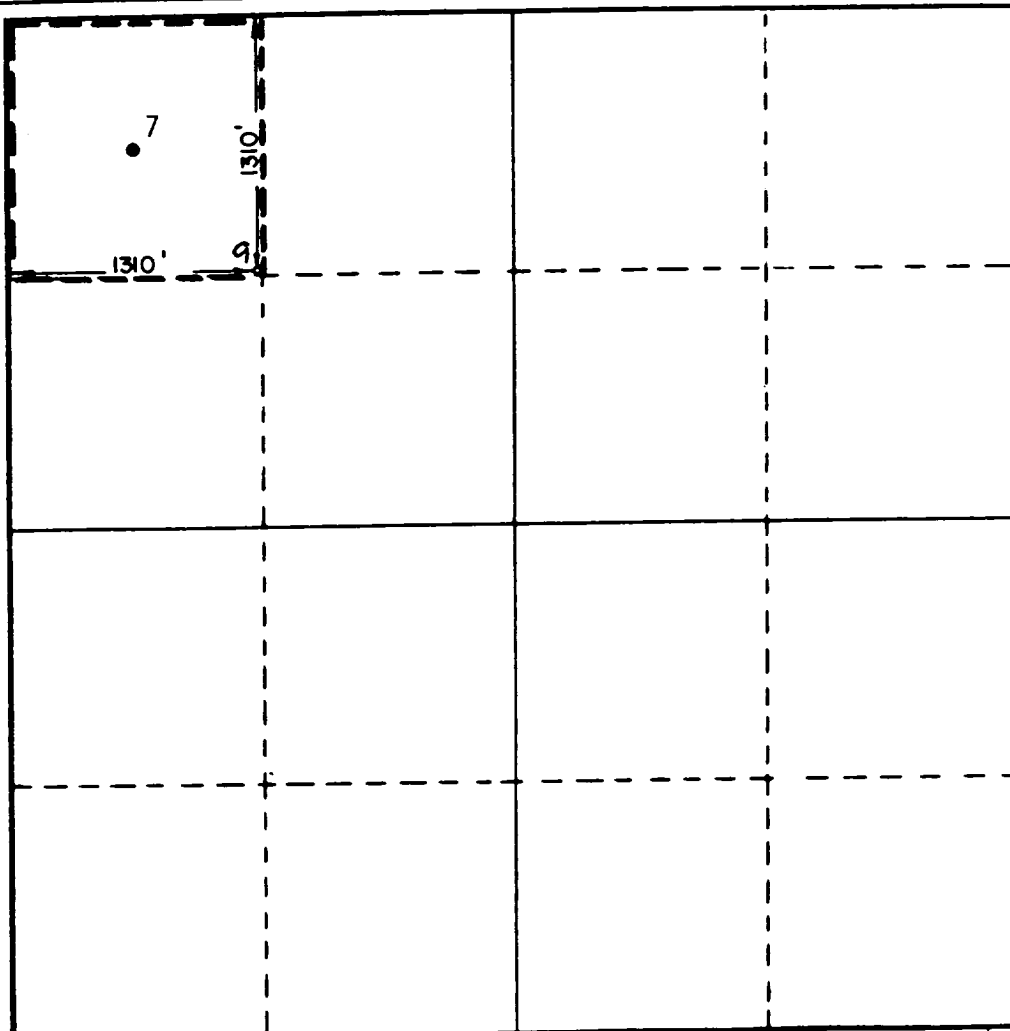
Operator CHAVEROO OPERATING CO.			Lease HUMBLE FEDERAL		Well No. 9
Unit Letter D	Section 25	Township 7S	Range 32E	County ROOSEVELT	
Actual Footage Location of Well: 1310 feet from the NORTH line and 1310 feet from the WEST line					
Ground Level Elev. 4451.6	Producing Formation SAN ANDRES		Pool CHAVEROO SAN ANDRES		Dedicated Acreage: 40 Acres

1. Outline the acreage dedicated to the subject well by colored pencil or hatchure marks on the plat below.
2. If more than one lease is dedicated to the well, outline each and identify the ownership thereof (both as to working interest and royalty).
3. If more than one lease of different ownership is dedicated to the well, have the interests of all owners been consolidated by communitization, unitization, force-pooling, etc?

☐ Yes ☐ No If answer is "yes," type of consolidation _____

If answer is "no," list the owners and tract descriptions which have actually been consolidated. (Use reverse side of this form if necessary.) _____

No allowable will be assigned to the well until all interests have been consolidated (by communitization, unitization, forced-pooling, or otherwise) or until a non-standard unit, eliminating such interests, has been approved by the Commission.



CERTIFICATION

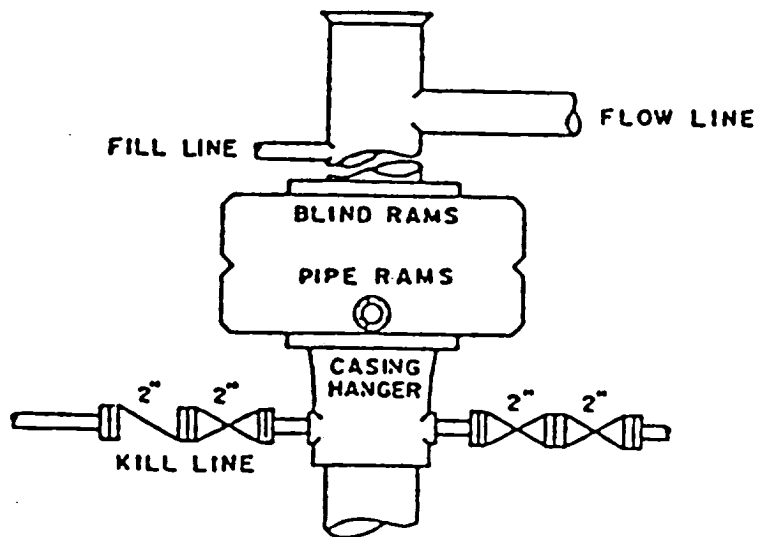
I hereby certify that the information contained herein is true and complete to the best of my knowledge and belief.

Name Arthur R. Brown
Position
Agent
Company
CHAVEROO OPERATING CO., INC.
Date
NOVEMBER 19, 1984

I hereby certify that the well location shown on this plat was plotted from field notes of actual surveys made by me or under my supervision, and that the same is true and correct to the best of my knowledge and belief.

Date Surveyed
10/25/84
Registered Professional Engineer and/or Land Surveyor

John W. West
Certificate No. **JOHN W. WEST, 976**
RONALD J. EIDSON, 3239



BOP STACK

SERIES 600

DEPTH INTERVAL

BELOW 8-5/8" CASING SEAT

BOP ARRANGEMENT