

STATE OF NEW MEXICO
OIL AND MINERALS DEPARTMENT

OIL CONSERVATION DIVISION

P. O. BOX 2088

SANTA FE, NEW MEXICO 87501

Form C-101
Revised 10-1-78

NO. OF COPIES RECEIVED	
DISTRIBUTION	
SANTA FE	
FILE	
U.S.G.S.	
LAND OFFICE	
OPERATOR	

5A. Indicate Type of Lease
STATE ☐ FEE ☒

5. State Oil & Gas Lease No.

APPLICATION FOR PERMIT TO DRILL, DEEPEN, OR PLUG BACK

Type of Work

DRILL ☒

DEEPEN ☐

PLUG BACK ☐

Type of Well

OIL WELL ☒

GAS WELL ☐

OTHER

SINGLE ZONE ☐

MULTIPLE ZONE ☐

Name of Operator

Yates Petroleum Corporation

Address of Operator

207 South Fourth Street - Artesia, NM 88210

Location of Well

UNIT LETTER K

LOCATED 2310

FEET FROM THE South

LINE

1650

FEET FROM THE

West

LINE OF SEC. 6

TWP. 7S

RGE. 33E

NMPM

7. Unit Agreement Name

8. Form or Lease Name

Jim Bob "ACT"

9. Well No.

1

10. Field and Pool, or Wildcat

Wildcat

12. County

Roosevelt

19. Proposed Depth

9750'

19A. Formation

Atoka

20. Rotary or C.T.

Rotary

Elevations (Name whether DE, KI, etc.)

4439.9' GR

21A. Kind & Status Plug. Bond

Blanket

21B. Drilling Contractor

Undesignated

22. Approx. Date Work will start

ASAP

PROPOSED CASING AND CEMENT PROGRAM

SIZE OF HOLE	SIZE OF CASING	WEIGHT PER FOOT	SETTING DEPTH	SACKS OF CEMENT	EST. TOP
17-1/2"	13-3/8"	48# H-40	400'	375 sacks	Circulate
11"	8-5/8"	24 & 32# J-55	3500'	1100 sacks	Circulate
7-7/8"	5-1/2"	17# N-80 & K-55	TD	As warranted	

We propose to drill and test the Atoka and intermediate formations. Approximately 400' of surface casing will be set and cement circulated to shut off gravel and cavings. If commercial, production casing will be run and cemented with adequate cover, perforated and stimulated as needed for production.

MUD PROGRAM: FW gel/LCM from surface to 400'; fresh water to 3500'; SW gel/starch to TD.

BOP PROGRAM: BOP's will be installed at the offset and tested daily.

Permit Expires 6 Months From Approval
Date Unless Drilling Underway.

BOVE SPACE DESCRIBE PROPOSED PROGRAM: IF PROPOSAL IS TO DEEPEN OR PLUG BACK, GIVE DATA ON PRESENT PRODUCTIVE ZONE AND PROPOSED NEW PRODUCTIVE ZONE. GIVE BLOWOUT PREVENTER PROGRAM, IF ANY.

Sub certify that the information above is true and complete to the best of my knowledge and belief.

By Clifton May Title Regulatory Agent Date April 18, 1985

(This space for State Use)

Eddie W. Seay

APPROVED BY Oil & Gas Inspector

TITLE

DATE

APR 24 1985

CONDITIONS OF APPROVAL, IF ANY:

**NEW MEXICO OIL CONSERVATION COMMISSION
WELL LOCATION AND ACREAGE DEDICATION PLAT**

Form C-102
Supersedes C-128
Effective 1-1-85

All distances must be from the outer boundaries of the Section.

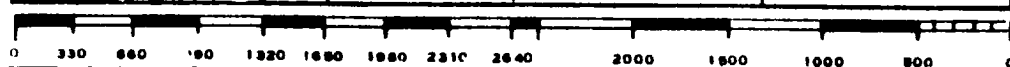
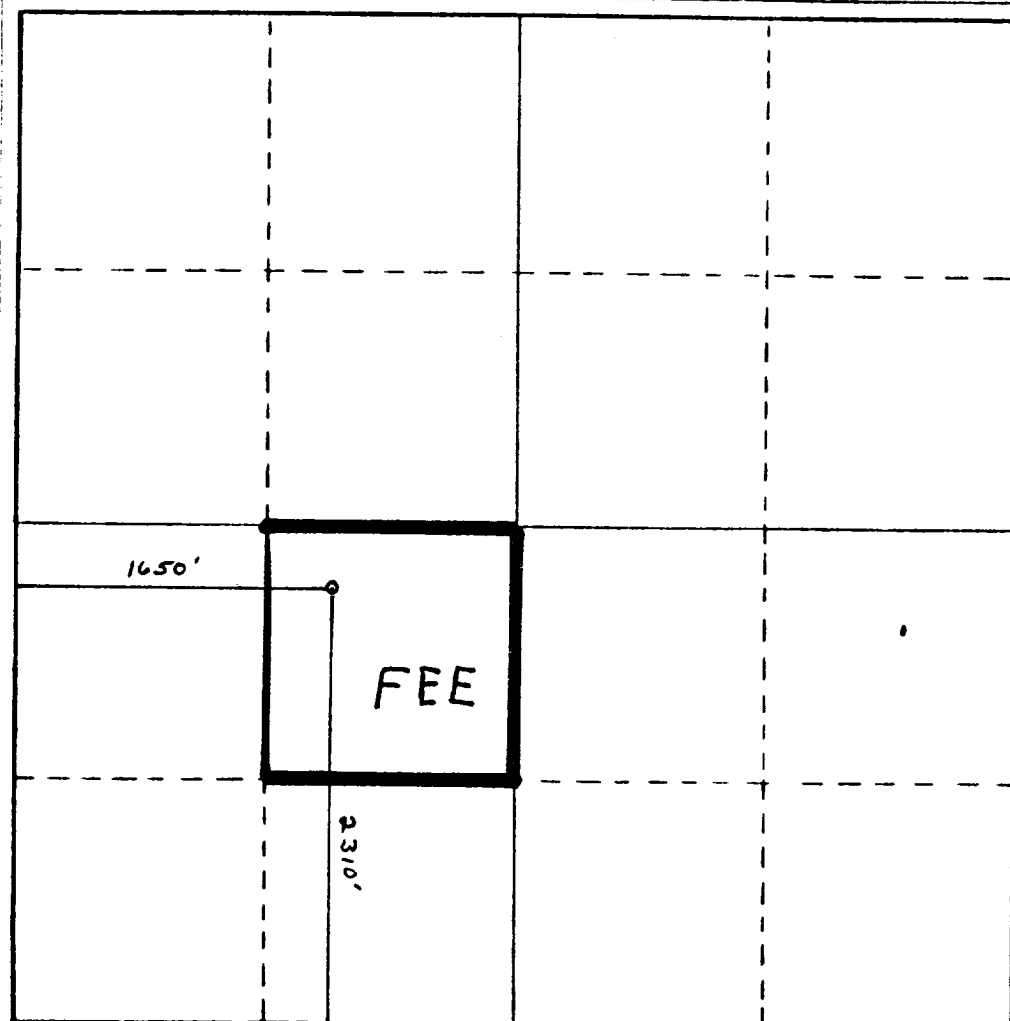
Operator Yates Petroleum Corporation			Lessee Jim Bob "ACI"		Well No. 1
Unit Letter K	Section 6	Township 7S	Range 33E	County Roosevelt	
Actual Footage Location of Well: 2310 feet from the South line and 1650 feet from the West line Ground Level Elev. 4439.9 Producing Formation ATOKA Pool WILDCAT Dedicated Acreage: 40 Acres					

1. Outline the acreage dedicated to the subject well by colored pencil or hatchure marks on the plat below.
2. If more than one lease is dedicated to the well, outline each and identify the ownership thereof (both as to working interest and royalty).
3. If more than one lease of different ownership is dedicated to the well, have the interests of all owners been consolidated by communization, unitization, force-pooling, etc?

☐ Yes ☒ No If answer is "yes," type of consolidation _____

If answer is "no," list the owners and tract descriptions which have actually been consolidated. (Use reverse side of this form if necessary.) _____

No allowable will be assigned to the well until all interests have been consolidated (by communization, unitization, forced-pooling, or otherwise) or until a non-standard unit, eliminating such interests, has been approved by the Commission.



CERTIFICATION

I hereby certify that the information contained herein is true and complete to the best of my knowledge and belief.

Clifton May
Name

Clifton May

Position

Regulatory Agent

Company

Yates Petroleum Corporation

Date

April 18, 1985

I hereby certify that the well location shown on this plat was plotted from field notes of actual surveys made by me or under my supervision, and that the same is true and correct to the best of my knowledge and belief.

April 17, 1985

Date Surveyed

Registered Professional Engineer and/or Land Surveyor

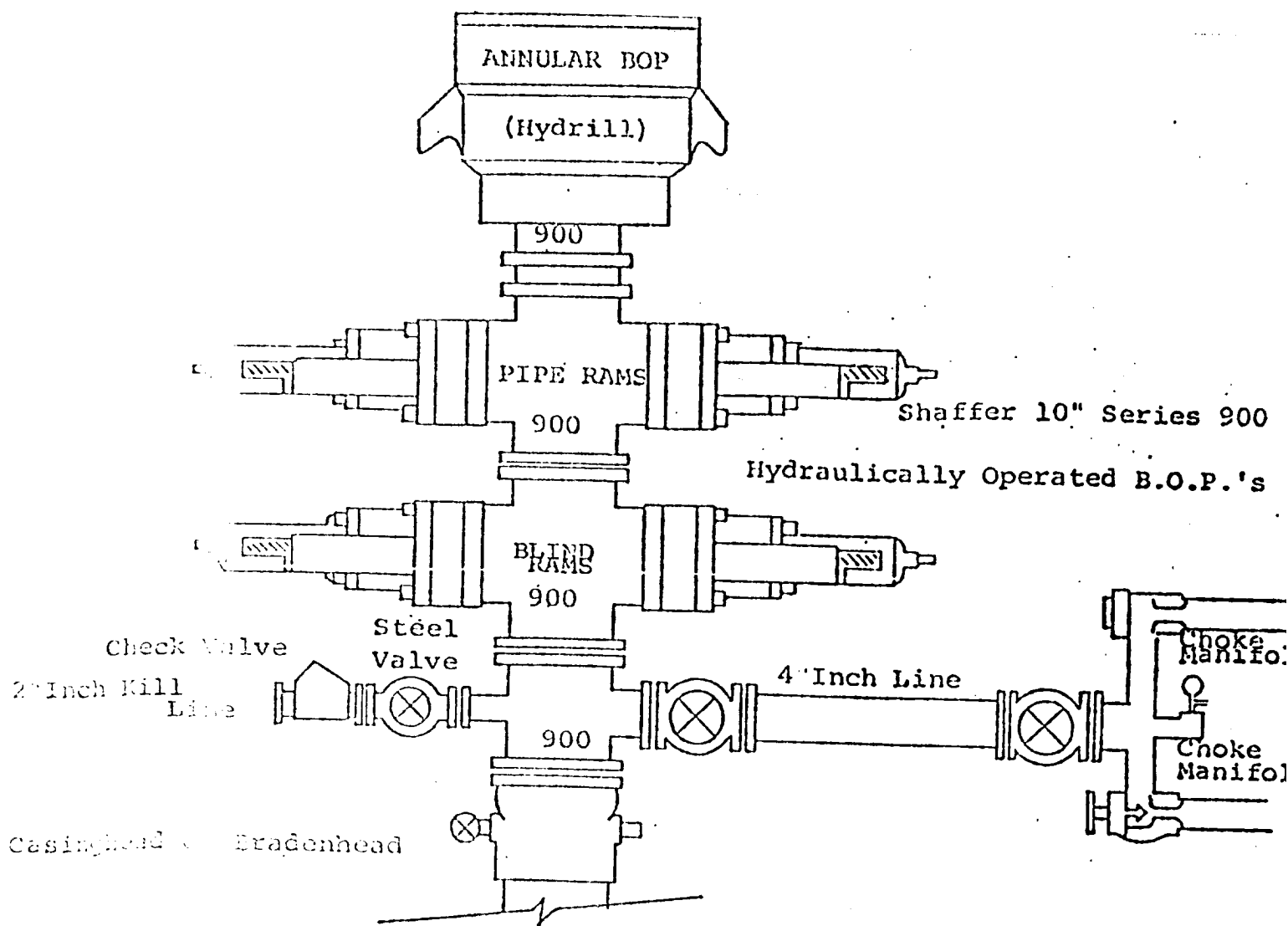
2440
Certificate No. *2440*



RECEIVED

APR 24 1985

MOBILE OFFICE



THE FOLLOWING CONSTITUTE MINIMUM BLOWOUT PREVENTER REQUIREMENTS

1. All preventers to be hydraulically operated with secondary manual control installed prior to drilling out from under casing.
2. Choke outlet to be a minimum of 4" diameter.
3. Kill line to be of all steel construction of 2" minimum diameter.
4. All connections from operating manifolds to preventers to be all steel. hole or tube a minimum of one inch in diameter.
5. The available closing pressure shall be at least 15% in excess of that required with sufficient volume to operate the B.O.P.'s.
6. All connections to and from preventer to have a pressure rating equivalent to that of the B.O.P.'s.
7. Inside blowout preventer to be available on rig floor.
8. Operating controls located a safe distance from the rig floor.
9. Hole must be kept filled on trips below intermediate casing.
10. D. P. float must be installed and used below zone of first gas intrusion.